



**STA-LOK<sup>®</sup>**

**RIGGING HARDWARE**



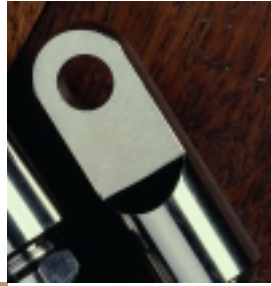
## Welcome to our new catalogue

Sta-Lok Terminals Ltd is one of the world's leading manufacturers of stainless steel rigging hardware.

Our products are manufactured to the highest standards, with a worldwide reputation for outstanding quality, reliability and value.

With over 35 years experience within the industry, we are committed to our customers' needs and the delivery of excellence.

We hope you find our latest catalogue informative. The following pages contain design and technical information providing a choice of options for every application.



### Sta-Lok Quality

Sta-Lok products were first introduced at the London International Boat Show in 1972, setting innovative standards in design, quality and performance.

Today we are committed to the development and manufacture of the highest quality products.

Our design specifications use only premium quality stainless steel and bronze alloys selected for their tensile strength and corrosion resistance. Strict quality control procedures ensure total material conformance and traceability.

Sta-Lok products are expertly manufactured to the highest standards. Continuous inspection throughout our manufacturing process ensures total conformance to tolerances and finish specifications.

Complementing our in house manufacturing, we also stock a wide range of stainless steel wire ropes and associated rigging hardware at our distribution centre in Essex England.



Sta-Lok products are available for Metric and Imperial wire ropes.

This catalogue details product for METRIC wire ropes

Sta-Lok Terminals Limited have taken every care to ensure the accuracy of the information published in this catalogue. Ongoing product development means that product specification may change without notice.



4	WIRE ROPE
5	FERRULES
6	THIMBLES/WIRE ROPE GRIPS
7-10	SWAGE TERMINALS
11-17	STA-LOK TERMINALS
18-21	STA-LOK INSULATORS
22	RIGGING SPARES KIT
23-24	STA-LOK WEDGES
25	STA-LOK COMPONENTS
26-29	GUARD RAIL FITTINGS
30-34	BRONZE TURNBUCKLES
35	TRADITIONAL TURNBUCKLES
36-44	STAINLESS STEEL TURNBUCKLES
45-52	SUPAJUST TURNBUCKLES
53-58	TURNBUCKLE COMPONENTS
59	FELCO WIRE CUTTERS
60	SWAGING MACHINES

## ORDERING IS EASY



Talk to our Sales Team on

**+44 (0)1206 390777**

or contact us by Fax on

**+44 (0)1206 395286**



Orders can be made by e-mail at

**orders@stalok.com**

Shop on-line at

**www.stalok.com**



To contact us by mail write to

**Sta-Lok Terminals Limited  
The Forge, Mistley Heath, Manningtree  
Essex CO11 2QH England**



If you are not sure what you need or cannot find a particular product, our experienced sales staff will be happy to offer advice on any of our products. With over 35 years experience within the industry, we will be able to help you with any requirements you may have.

**STA-LOK®**

is a Registered Trade Mark

**Office hours  
Monday - Friday  
8.30 am - 5.00 pm**

### OPEN AN ACCOUNT TODAY

You will benefit from trade discounts, free merchandising materials and much more...

Trade accounts are available to companies only.

### EASY PAYMENT OPTIONS

Credit card: Mastercard, Visa, Switch and Delta.

Cheque: Payable to Sta-Lok Terminals Limited.

For conditions of sale, refer to page 61.



### DELIVERY

#### UK MAINLAND

Subject to stock availability.

#### NEXT DAY DELIVERY

Place your order by 2.30 pm and we will despatch it the same day.

#### 10.00 AM DELIVERY

Sta-Lok will deliver your order before 10.00 am the next day.

#### 12.00 NOON DELIVERY

Sta-Lok will deliver your order before 12.00 noon the next day.

#### SATURDAY DELIVERY

Sta-Lok will deliver your order before 12.00 noon Saturday.

#### SAME DAY DELIVERY

Sta-Lok recognises that some jobs just can't wait until the next day, so why not call 01206 390778 for details on same day delivery.

#### VISIT OUR TRADE COUNTER

Our Trade Counter is open:  
Monday - Friday  
8.30 am to 5.00 pm

### INTERNATIONAL DELIVERY

Our shipping department have over 35 years experience exporting product all over the world.

For details  
e-mail [shipping@stalok.com](mailto:shipping@stalok.com)



## CUSTOMER SERVICES

Sta-Lok's Research and Development programme ensures that there is always something NEW!

Our commitment to manufacturing excellence ensures ongoing investment in machining technology, providing high quality standards in tolerances and finish.

With over 35 years experience within the industry, our expert team can help you with any requirements you may have, offering free advice and technical support on any of our products.

For businesses, Sta-Lok offers a wide range of services to support your customers' needs, providing technical support, product merchandising and stocking programmes to suit your individual requirements.

Our manufacturing facility offers OEM customers versatile machining capabilities from one off designs to full production solutions, providing full product traceability and certification where needed.

**Find out how we can help you!**

**Call 01206 390777**

### Sta-Lok Merchandising Kit

Kit Reference SM-K1



#### Add a professional touch to your display!

Sta-Lok have designed a range of eye catching product display cards.

Products can also be bulk packed depending on your requirements.

Please specify how you would like your items supplied.

*Our experienced sales staff will be happy to offer advice on any of our products, we will also provide technical support and site visits to discuss your requirements.*

*We stock a huge range of products for riggers, manufacturers and retailers. We think you will find our products great value for money.*

For details on Distributors and Resellers

**e-mail [reseller@stalok.com](mailto:reseller@stalok.com)**



## WIRE ROPES

**Sta-Lok** stock a wide range of stainless steel wire ropes to suit all applications. Manufactured from high quality 316 stainless steel grade 1.4401, wire ropes are supplied coiled on 100 and 200 metre reels. Wire ropes can be cut to customers' requirements at additional cost.

Dimensions and breaking loads conform to BS MA 29.

Wire ropes available:

1 x 19 construction for general applications.

Dyform compacted strand provides high strength and low stretch.

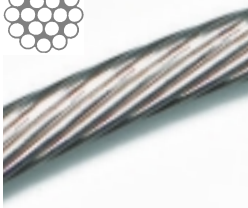
7 x 7 construction provides flexibility and is the stronger of the flexible wire ropes.

7 x 19 construction is the most flexible of the multi-strand wire ropes.

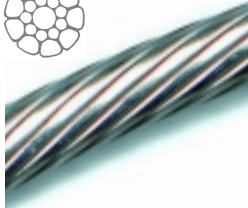
PVC Covered.



1 x 19



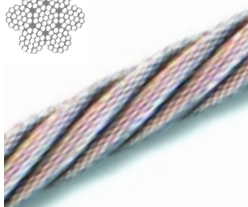
DYFORM



7 x 7



7 x 19



PVC COVERED



WIRE CONSTRUCTION

Cat Ref	Wire mm	Min Load KN
W119-1.5	1.5	1.80
W11-2	2	3.13
W119-2.5	2.5	4.90
W119-3	3	7.06
W119-4	4	12.55
W119-5	5	19.61
W119-6	6	28.24
W119-7	7	34.81
W119-8	8	45.50
W119-10	10	71.10
W119-12	12	101.99
W119-14	14	139.06
W119-16	16	182.02
W119-19	19	212.03
W119-22	22	285.08
W119-25	25	398.00

1 X 19

WIRE CONSTRUCTION

Cat Ref	Wire mm	Min Load KN
WD-3	3	9.81
WD-4	4	17.46
WD-5	5	23.93
WD-6	6	34.81
WD-7	7	48.15
WD-8	8	60.31
WD-10	10	95.81
WD-12	12	141.22
WD-14	14	189.28
WD-16	16	251.06
WD-19	19	313.82

DYFORM

WIRE CONSTRUCTION

Cat Ref	Wire mm	Min Load KN
W77-2	2	2.37
W77-2.5	2.5	3.71
W77-3	3	5.34
W77-4	4	9.49
W77-5	5	14.81
W77-6	6	21.38
W77-7	7	29.13
W77-8	8	37.95
W77-10	10	59.33
W77-12	12	85.42

7 x 7

WIRE CONSTRUCTION

Cat Ref	Wire mm	Min Load KN
W719-2	2	2.21
W719-2.5	2.5	3.40
W719-3	3	5.00
W719-4	4	8.89
W719-5	5	13.92
W719-6	6	20.00
W719-7	7	27.26
W719-8	8	35.60
W719-10	10	55.60
W719-12	12	80.02
W719-14	14	108.86
W719-16	16	133.37

7 x 19

WIRE CONSTRUCTION WHITE PVC COVERED 1 x 19

Cat Ref	Wire mm	Min Load KN
WPC1-4/6	4/6	12.55
WPC1-5/7	5/7	19.61
WPC1-5/9	5/9	19.61

WIRE CONSTRUCTION WHITE PVC COVERED 7 x 7

Cat Ref	Wire mm	Min Load KN
WPC7-4/6	4/6	9.49

Figures based on Manufacturers Minimum Breaking Load KN

## BRITISH STANDARD COPPER FERRULES

Reference BF-CU

METRIC WIRE

Cat Ref	Wire mm	Wire Rope Limits (mm)	
		Steel core	Fibre core
BF-CU 01			0.95 – 1.05
BF-CU 1.5	1	0.95 – 1.05	1.45 – 1.60
BF-CU 02	1.5	1.45 – 1.60	1.95 – 2.15
BF-CU 2.5	2	1.95 – 2.15	2.40 – 2.65
BF-CU 03	2.5	2.40 – 2.65	2.90 – 3.20
BF-CU 3.5	3	2.90 – 3.20	3.40 – 3.70
BF-CU 04	3.5	3.40 – 3.70	3.90 – 4.30
BF-CU 4.5	4	3.90 – 4.30	4.40 – 4.80
BF-CU 05	5	4.60 – 5.40	4.90 – 5.40
BF-CU 06	6	6.30	5.85
BF-CU 07	7	7.35	6.90
BF-CU 08	8	8.50	7.85
BF-CU 10	10	10.50	9.80
BF-CU 12	12	12.50	11.8

Where applicable Ferrules conform to British Standards.

Din Standard Ferrules are also available. Please ask for details.

## BRITISH STANDARD ALUMINIUM FERRULES

Reference BF-AL

METRIC WIRE

Cat Ref	Wire mm	Wire Rope Limits (mm)	
		Steel core	Fibre core
BF-AL 01			0.95 – 1.05
BF-AL 1.5	1	0.95 – 1.05	1.45 – 1.60
BF-AL 02	1.5	1.45 – 1.60	1.95 – 2.15
BF-AL 2.5	2	1.95 – 2.15	2.40 – 2.65
BF-AL 03	2.5	2.40 – 2.65	2.90 – 3.20
BF-AL 3.5	3	2.90 – 3.20	3.40 – 3.70
BF-AL 04	3.5	3.40 – 3.70	3.90 – 4.30
BF-AL 4.5	4	3.90 – 4.30	4.40 – 4.80
BF-AL 05	5	4.60 – 5.40	4.90 – 5.40
BF-AL 06	6	6.30	5.85
BF-AL 07	7	7.35	6.90
BF-AL 08	8	8.50	7.85
BF-AL 10	10	10.50	9.80
BF-AL 12	12	12.50	11.8



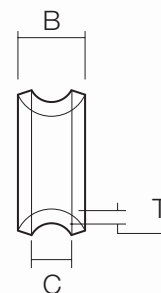
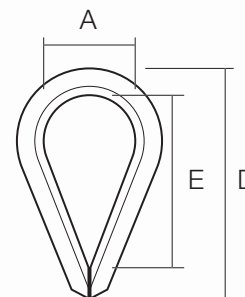
**THIMBLES**

Reference T

Cat Ref	Wire mm	A	B	C	D	E	T
T-02	2	10.3	4.8	3.0	25	20	.75
T-03	3	12.4	5.5	3.8	29	23	1.0
T-04	4	13.5	6.7	4.5	34	27	1.0
T-05	5	15.6	8.0	5.6	37	30	1.5
T-06	6	17.3	9.3	6.7	41	31	1.5
T-07	7	18.5	10.0	8.0	42	32	1.5
T-08	8	22.6	12.0	8.8	52	39	1.5
T-10	10	26.7	14.6	10.7	58	44	1.8
T-12	12	32.0	17.0	13.4	69	53	1.8

Stainless steel grade 316.

**METRIC WIRE**



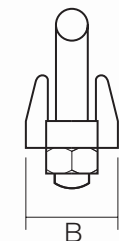
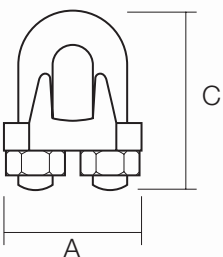
**WIRE ROPE GRIPS**

Reference WG

Cat Ref	Wire mm	A	B	C
WG-02	2	14	14	18
WG-03	3	16	15	21
WG-04	4	18	18	24
WG-05	5	22	20	28
WG-06	6	27	22	33
WG-08	8	34	27	40
WG-10	10	44	34	50
WG-12	12	50	38	63

Stainless steel grade 316.

**METRIC WIRE**



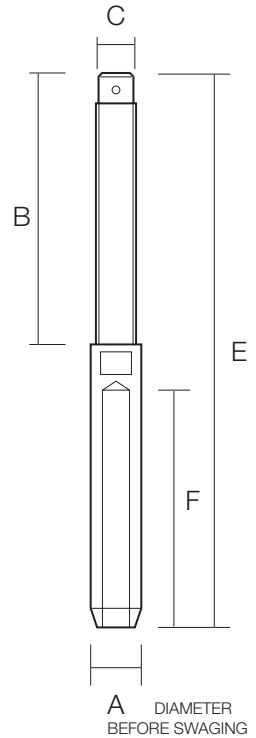
## OPEN BODY SWAGE STUD (UNF)

Reference 051

METRIC WIRE



Cat Ref	Wire mm	A	B	E	F	UNF C
051-03	3	6.2	56	108	39	1/4
051-04-1/4	4	7.4	56	119	45	1/4
051-04	4	7.4	60	123	45	5/16
051-05-5/16	5	9.0	60	128	51	5/16
051-05	5	9.0	67	134	51	3/8
051-06-3/8	6	12.4	67	152	61	3/8
051-06	6	12.4	75	159	61	7/16
051-07-7/16	7	14.2	75	166	70	7/16
051-07	7	14.2	81	172	70	1/2
051-08-1/2	8	16.1	81	183	80	1/2
051-08-5/8	8	16.1	100	202	80	5/8
051-10	10	17.7	100	227	100	5/8
051-12	12	21.4	124	279	120	3/4
051-14	14	25.0	140	320	140	7/8
051-16	16	28.2	162	363	160	1
051-19	19	34.5	165	404	190	1 1/8
051-22	22	40.3	200	474	242	1 1/4
051-26	26	45.8	220	544	290	1 3/8

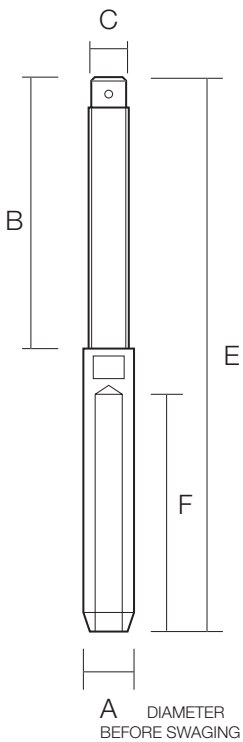


Right hand thread only.

## OPEN BODY SWAGE STUD (METRIC)

Reference 051-M

METRIC WIRE



Cat Ref	Wire mm	A	B	E	F	METRIC C
051-03-M6	3	6.2	56	108	39	M6
051-04-M6	4	7.4	56	119	45	M6
051-04-M8	4	7.4	60	123	45	M8
051-05-M8	5	9.0	60	128	51	M8
051-05-M10	5	9.0	67	134	51	M10
051-06-M10	6	12.4	67	152	61	M10
051-06-M12	6	12.4	81	168	61	M12
051-07-M12	7	14.2	81	172	70	M12
051-08-M12	8	16.1	81	183	80	M12
051-08-M16	8	16.1	100	202	80	M16
051-10-M16	10	17.7	100	227	100	M16
051-12-M20	12	21.4	124	279	120	M20
051-14-M22	14	25.0	140	320	140	M22
051-16-M24	16	28.2	162	363	160	M24
051-19-M27	19	34.5	165	404	190	M27
051-22-M30	22	40.3	200	474	242	M30
051-26-M36	26	45.8	220	544	290	M36

Right hand thread only.



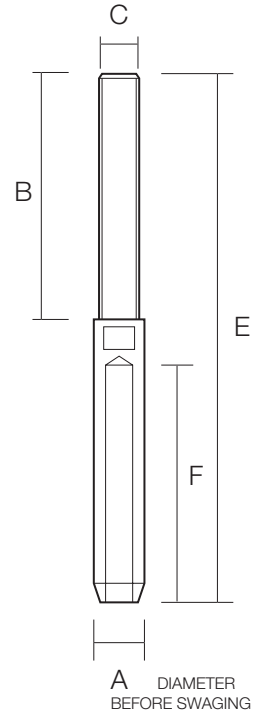
## CLOSED BODY SWAGE STUD (UNF)

Reference 061

METRIC WIRE



Cat Ref	Wire mm	A	B	E	F	UNF C
061-03	3	6.2	56	108	39	1/4
061-04	4	7.4	60	123	45	5/16
061-05-5/16	5	9.0	60	128	51	5/16
061-05	5	9.0	67	134	51	3/8
061-06-3/8	6	12.4	67	152	61	3/8
061-06	6	12.4	75	159	61	7/16
061-07-7/16	7	14.2	75	166	70	7/16
061-07	7	14.2	81	172	70	1/2
061-08-1/2	8	16.1	81	183	80	1/2
061-08-5/8	8	16.1	100	202	80	5/8
061-10	10	17.7	100	227	100	5/8
061-12	12	21.4	124	279	120	3/4
061-14	14	25.0	140	320	140	7/8
061-16	16	28.2	162	363	160	1
061-19	19	34.5	165	404	190	1 1/8
061-22	22	40.3	200	474	242	1 1/4
061-26	26	45.8	220	544	290	1 3/8

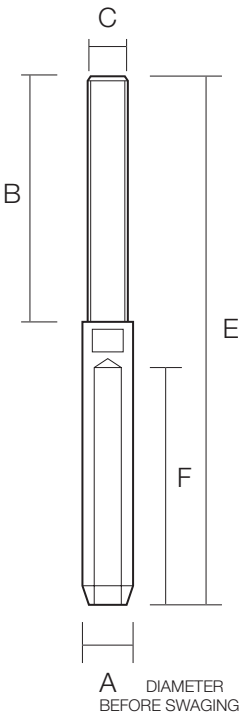


Right hand thread only.

## CLOSED BODY SWAGE STUD (METRIC)

Reference 061-M L=Left Hand 061-M R=Right Hand

METRIC WIRE



Cat Ref	Wire mm	A	B	E	F	METRIC C
061-03-M6 L/R	3	6.2	56	108	39	M6
061-04-M6 L/R	4	7.4	60	119	45	M6
061-04-M8 L/R	4	7.4	60	123	45	M8
061-05-M8 L/R	5	9.0	60	128	51	M8
061-05-M10 L/R	5	9.0	67	134	51	M10
061-06-M10 L/R	6	12.4	67	152	61	M10
061-06-M12 L/R	6	12.4	81	168	61	M12
061-07-M12 L/R	7	14.2	81	172	70	M12
061-08-M12 L/R	8	16.1	81	183	80	M12
061-08-M16 L/R	8	16.1	100	202	80	M16
061-10-M16 L/R	10	17.7	100	227	100	M16
061-12-M20 L/R	12	21.4	124	279	120	M20
061-14-M22 L/R	14	25.0	140	320	140	M22
061-16-M24 L/R	16	28.2	162	363	160	M24
061-19-M27 L/R	19	34.5	165	404	190	M27
061-22-M30 L/R	22	40.3	200	474	242	M30
061-26-M36 L/R	26	45.8	220	544	290	M36

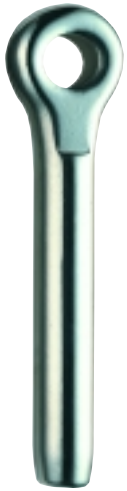


Right and left hand threads available.

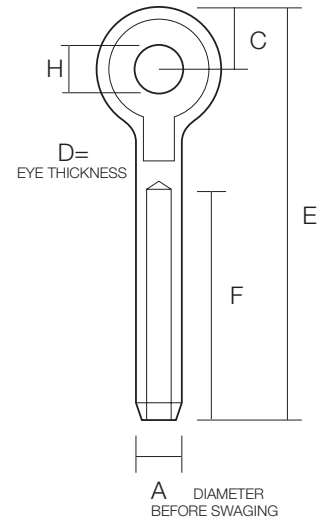
## SWAGE EYE

Reference 039

## METRIC WIRE



Cat Ref	Wire mm	A	C	D	E	F	H
039-03	3	6.2	6.4	6.0	60	39	6.4
039-04	4	7.4	8.0	7.0	72	45	8.1
039-05	5	9.0	9.5	8.0	84	52	9.6
039-06	6	12.4	11.1	9.5	102	64	11.2
039-07	7	14.2	12.7	11.0	113	70	12.8
039-08	8	16.1	12.7	11.7	128	80	14.5
039-10	10	17.7	15.9	15.0	155	100	16.1
039-12	12	21.4	22.5	19.0	189	120	19.5
039-14	14	25.0	25.5	22.0	216	140	22.5
039-16	16	28.2	31.7	24.0	250	160	25.4
039-19	19	34.5	36.5	28.0	296	190	28.6
039-22	22	40.3	39.7	32.0	350	242	32.0
039-26	26	45.8	42.9	34.0	410	290	35.0



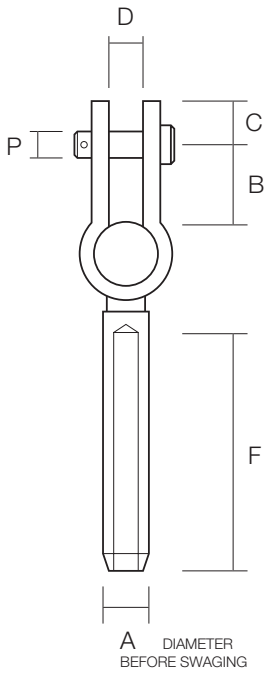
Sizes 3-10mm are Forged style.

Sizes 12-26mm are Machined style.

## STRAP TOGGLE SWAGE

Reference 038

## METRIC WIRE



Cat Ref	Wire mm	A	B	C	D	F	P
038-03	3	6.2	15	9.0	6.4	39	6.4
038-04	4	7.4	19	10	8.4	45	7.9
038-05	5	9.0	21	11	9.9	51	9.5
038-06	6	12.4	25	15	11.5	61	11.1
038-07	7	14.2	28	16	13.1	70	12.7
038-08	8	16.1	28	16	13.1	80	12.7
038-10	10	17.7	33	20	16.3	100	16.0
038-12	12	21.4	34	25	19.1	120	18.5
038-14	14	25.0	40	32	22.2	140	21.5

Unique toggle action allows full articulation in two planes.



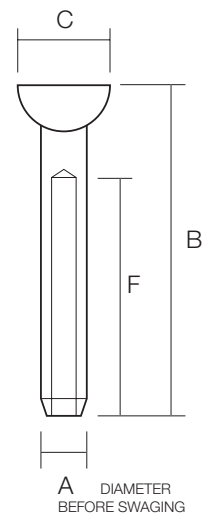
## STEMBALL SWAGE

Reference 042

## METRIC WIRE



Cat Ref	Wire mm	A	B	C	F
042-04	4	7.4	70	14.6	45
042-05	5	9.0	77	18.2	52
042-06	6	12.4	87	21.2	64
042-07	7	14.2	97	21.6	70
042-08	8	16.1	108	26.5	80
042-10	10	17.7	130	27.6	100

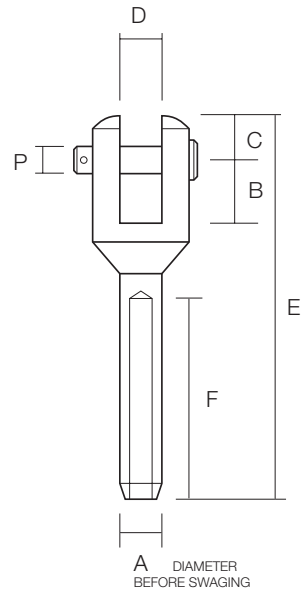


## SWAGE FORK (MACHINED)

METRIC WIRE

Reference 035

Cat Ref	Wire mm	A	B	C	D	E	F	P
035-03	3	6.2	10.0	7.8	6.4	70	39	6.2
035-04	4	7.4	14.7	10.3	7.9	86	45	7.7
035-05	5	9.0	17.5	11.9	9.5	100	51	9.3
035-06	6	12.4	22.2	15.8	11.1	123	61	10.9
035-07	7	14.2	25.1	16.0	11.1	131	70	10.9
035-08	8	16.1	27.4	19.2	13.7	152	80	12.6
035-10	10	17.7	29.4	22.6	15.9	183	100	15.6
035-12	12	21.4	33.3	25.5	19.1	219	120	18.5
035-14	14	25.0	38.1	31.5	22.2	249	140	21.5
035-16	16	28.2	40.0	33.6	25.4	275	160	25.0
035-19	19	34.5	50.0	40.8	28.6	366	190	28.2
035-22	22	40.3	60.3	44.4	31.8	417	242	31.5
035-26	26	45.8	69.8	57.1	34.9	484	290	34.6



Machined from stainless steel bar.

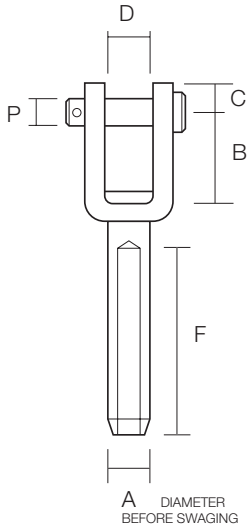
## SWAGE FORK

METRIC WIRE

Reference G035

Cat Ref	Wire mm	A	B	C	D	F	P
G035-04	4	7.4	14.7	8.8	11.1	45	7.7
G035-05	5	9.0	14.7	8.8	11.1	51	7.7

Two part assembly.



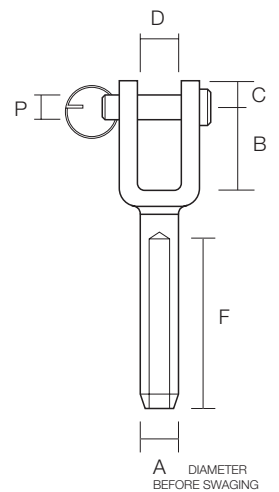
## SWAGE FORK (WELDED)

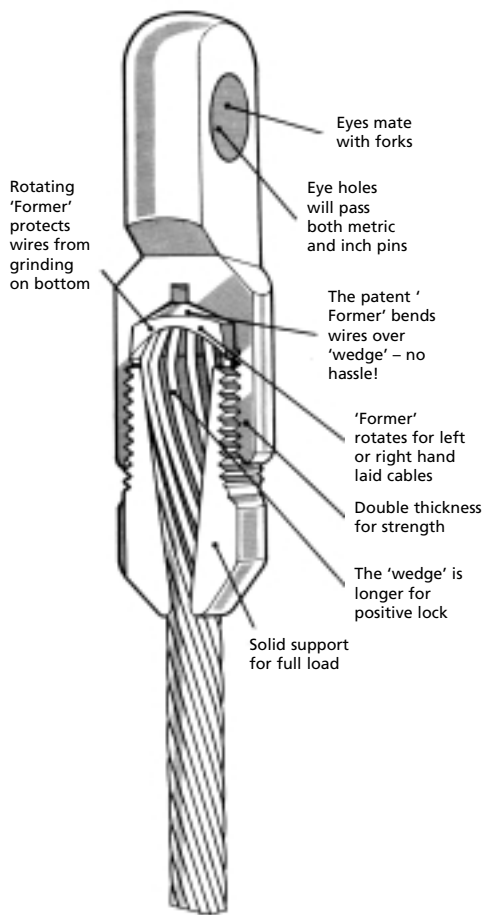
METRIC WIRE

Reference WSF

Cat Ref	Wire mm	A	B	C	D	E	F	P
WSF-02	2	5.4	11.5	6.0	7.0	60	30	5.0
WSF-03	3	6.3	12.0	6.5	8.0	75	38	6.0
WSF-04	4	7.5	15.0	8.5	11.0	85	45	8.0
WSF-05	5	9.0	17.5	10.0	12.0	97	51	9.0
WSF-06	6	12.5	27.2	12.0	14.5	121	64	12.0

Welded assembly.





The Sta-Lok system is a simple mechanical method of terminating 1 x 19, 7 x 7, 7 x 19 and compacted strand wire ropes. Suitable for both right hand lay and left hand lay constructions.

### Hand fitted instead of machine swaged

The Sta-Lok terminal can be fitted on site using very simple hand tools.

The Sta-Lok terminal will work under constant loading and variable shock loading. In all situations the Sta-Lok terminal has proven to be totally reliable.

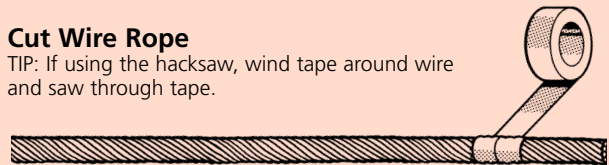
### Reusable

Manufactured from 316 stainless steel. All Sta-Lok terminals are reusable\* requiring no servicing, providing long life and very low maintenance costs.

\*A new wedge component must be used.

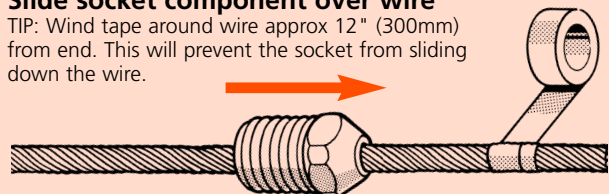
### STEP 1 Cut Wire Rope

TIP: If using the hacksaw, wind tape around wire and saw through tape.



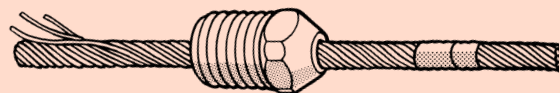
### STEP 2 Slide socket component over wire

TIP: Wind tape around wire approx 12" (300mm) from end. This will prevent the socket from sliding down the wire.



### STEP 3 Unravel outer strands 2" to 3" (50-76mm) to expose central core

TIP: Use a penknife to prise initial strands out of position.



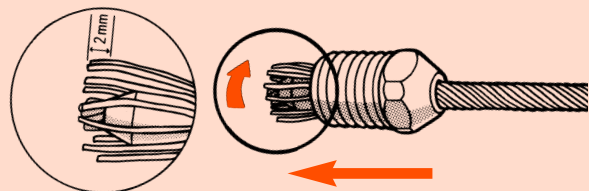
### STEP 4 Slide wedge component over central core of wire rope



### STEP 5 Reposition outer strands

Turn outer strands either clockwise or anti-clockwise, depending on the lay of the wire, around the wedge. Ensure approx 1/8" (2-3mm) of the central core protrudes from the end of the wedge. Outer strands should be evenly situated around the wedge. Care should be taken to ensure that a strand does not slip into the slit of the wedge.

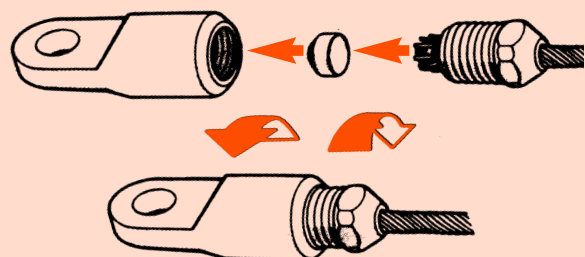
TIP: Push the socket towards end of wire, while repositioning the outer strands, this will help control. When wire strands are in position, push socket firmly, as indicated to hold wires in position.



### STEP 6 Final Assembly

Ensure former component sits in bottom of end fitting. Screw socket assembly into end fitting and tighten with spanners. The assembly is now complete.

TIP: Undue force is not required to terminate the wire. Fitting instructions are supplied with each Terminal.



In 1973 Sta-Lok introduced a new design of wire rope terminal which so simplified the termination of wire rope that it became essential equipment for both the amateur and professional rigger.

Thirty years on, the Sta-Lok terminal is used by professionals around the world, and has gained world-wide recognition for high quality and total reliability.

In Independent tests against other brands on the market today Sta-Lok is still the preferred choice.

- All Sta-Lok Terminals are supplied with 1 X 19 wedges unless specified.
- Catalogue Reference Numbers shown in this catalogue are for fittings with 1 X 19 wire ropes.
- If you require fittings for 7 X 19 or 7 X 7 wire ropes please use prefix 7 instead of 0  
i.e. 733 – for a Sta-Lok eye 734 – for a Sta-Lok fork etc.
- If you require fittings for Dyform wire ropes please add the prefix D before the 0  
i.e. D033 – for a Sta-Lok eye D034 – for a Sta-Lok fork etc.
- Sta-Lok terminals have been designed for use with stainless steel wire ropes. They should not be used with Galvanised wire ropes because rapid galvanic action will cause the wire rope to corrode and fail.
- Sta-Lok terminals are not suitable for use with wire ropes with fibre cores.

**CAUTION.**

When using Dyform/ Compacted strand wire ropes, it is strongly recommended to use the larger diameter thread options on threaded stud terminals.

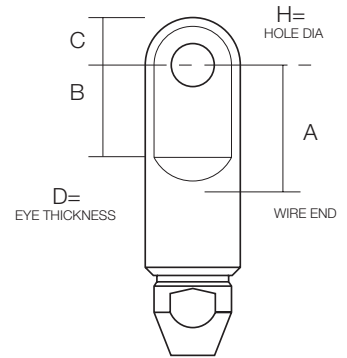
**STA-LOK EYE**

Reference 033

**METRIC WIRE**



Cat Ref	Wire mm	A	B	C	D	H
033-03	3	17.9	10.0	6.3	5.0	6.5
033-04	4	20.3	14.7	8.0	5.8	8.0
033-05	5	25.9	18.0	10.5	7.5	10.0
033-06	6	31.0	22.2	12.7	9.5	13.0
033-07	7	32.5	24.6	13.6	10.4	13.0
033-08-1/2	8	35.7	27.0	14.4	12.0	13.0
033-08-5/8	8	35.7	27.0	15.9	13.5	16.0
033-10	10	41.1	29.2	17.8	13.5	16.0
033-11	11	42.9	33.3	22.5	19.0	19.5
033-12	12	42.9	33.3	22.5	19.0	19.5
033-14	14	55.6	38.1	25.5	20.0	22.5
033-16	16	63.8	40.0	27.1	20.0	22.5
033-19	19	68.3	49.2	36.5	27.0	28.6
033-22	22	122.2	60.3	39.7	33.3	34.9
033-26	26	128.6	60.3	42.9	33.3	34.9



The Sta-Lok system is a simple mechanical method of terminating wire ropes.

Hand fitted instead of machine swaged.

The Sta-Lok terminal can be fitted on site using very simple hand tools.

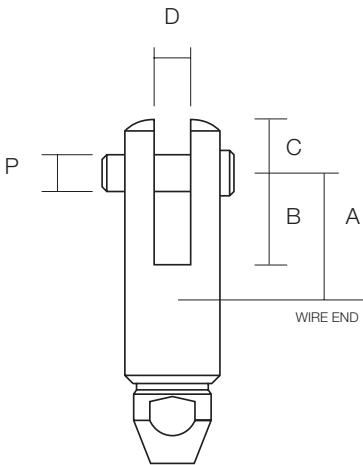
The Sta-Lok terminal will work under constant loading and variable shock loading. In all situations the Sta-Lok terminal has proven to be totally reliable.



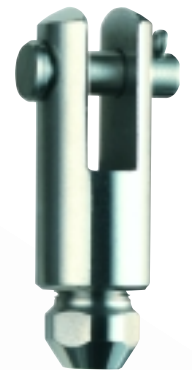
**STA-LOK FORK**

Reference 034

**METRIC WIRE**

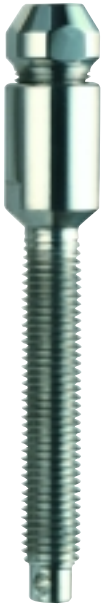


Cat Ref	Wire mm	A	B	C	D	P
034-03	3	15.5	10.0	8.0	5.5	5.0
034-04	4	21.1	14.7	8.9	6.4	6.4
034-05	5	24.4	18.0	11.4	8.0	8.0
034-06	6	30.2	22.2	15.8	11.1	10.9
034-07	7	33.9	25.1	15.9	11.1	10.9
034-08	8	37.0	27.4	19.2	13.7	12.6
034-10	10	39.7	29.4	22.6	13.7	15.6
034-11	11	46.0	33.3	25.5	19.4	18.5
034-12	12	46.0	33.3	25.5	19.4	18.5
034-14	14	54.0	38.1	31.5	20.4	21.5
034-16	16	57.5	40.0	33.6	20.4	21.5
034-19	19	73.8	50.0	40.8	27.8	27.0
034-22	22	152.4	60.3	45.6	34.9	33.0
034-26	26	152.4	60.3	50.3	34.9	33.0

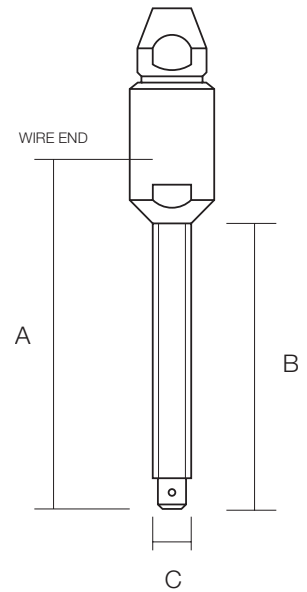


**STA-LOK STUD (UNF THREAD) METRIC WIRE**

Reference 036



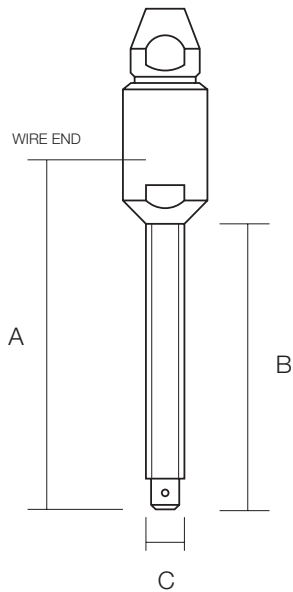
Cat Ref	Wire mm	A	B	UNF C
036-03	3	62	56	1/4
036-04-1/4	4	62	56	1/4
036-04	4	64	59	5/16
036-05-5/16	5	65	59	5/16
036-05	5	78	67	3/8
036-06-3/8	6	84	67	3/8
036-06	6	93	75	7/16
036-07-7/16	7	95	75	7/16
036-07	7	97	81	1/2
036-08	8	98	81	1/2
036-08-5/8	8	110	95	5/8
036-10	10	111	95	5/8
036-10-3/4	10	129	124	3/4
036-11	11	139	124	3/4
036-12	12	139	124	3/4
036-12-7/8	12	168	140	7/8
036-14	14	170	140	7/8
036-16	16	172	140	1
036-19	19	205	171	1 1/8
036-22	22	281	227	1 1/4
036-26	26	297	232	1 3/8



Right hand thread only.

**STA-LOK STUD (METRIC THREAD) METRIC WIRE**

Reference 036-M L=Left Hand Thread 036-M R=Right Hand Thread



Cat Ref	Wire mm	A	B	METRIC C
036-03-M6 L/R	3	62	56	M6
036-04-M6 L/R	4	62	56	M6
036-04-M8 L/R	4	64	59	M8
036-05-M8 L/R	5	65	59	M8
036-05-M10 L/R	5	78	67	M10
036-06-M10 L/R	6	84	67	M10
036-06-M12 L/R	6	93	81	M12
036-07-M12 L/R	7	97	81	M12
036-08-M12 L/R	8	98	81	M12
036-08-M16 L/R	8	110	95	M16
036-10-M16 L/R	10	111	95	M16
036-10-M20 L/R	10	129	124	M20
036-11-M20 L/R	11	139	124	M20
036-12-M20 L/R	12	139	124	M20
036-12-M22 L/R	12	168	140	M22
036-14-M22 L/R	14	170	140	M22
036-16-M24 L/R	16	172	140	M24
036-19-M27 L/R	19	205	171	M27
036-22-M30 L/R	22	281	227	M30
036-26-M36 L/R	26	297	232	M36



Right and left hand thread available.

**STA-LOK LONG STUD  
(UNF THREAD)**

Reference 076

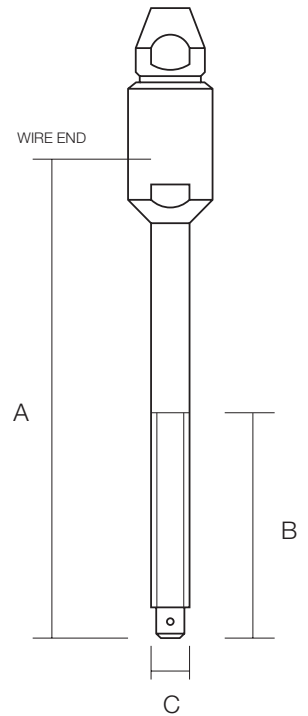
Cat Ref	Wire mm	A	B	UNF C
076-04	4	141	54	5/16
076-05-5/16	5	154	54	5/16
076-05	5	167	67	3/8
076-06-3/8	6	180	67	3/8
076-06	6	189	76	7/16
076-07	7	225	83	1/2
076-08	8	228	83	1/2
076-08-5/8	8	271	95	5/8
076-10	10	275	95	5/8
076-11	11	340	115	3/4
076-12	12	340	115	3/4

Right hand thread only.

The clever design of the Sta-Lok long terminal enables the replacement of damaged swage terminals without having to replace the wire rope.

All Sta-Lok terminals are stronger than the wire rope and are reusable\*.

\*A new wedge component must be used.



**STA-LOK LONG STUD  
(METRIC THREAD)**

Reference 076-M

Cat Ref	Wire mm	A	B	METRIC C
076-04-M8	4	141	54	M8
076-05-M8	5	154	54	M8
076-05-M10	5	167	67	M10
076-06-M10	6	180	67	M10
076-06-M12	6	225	83	M12
076-07-M12	7	225	83	M12
076-08-M12	8	228	83	M12
076-08-M16	8	271	95	M16
076-10-M16	10	275	95	M16
076-11-M20	11	340	115	M20
076-12-M20	12	340	115	M20

Right hand thread only.

**METRIC WIRE**

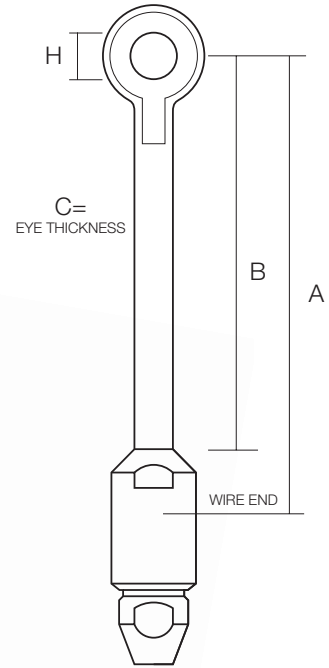
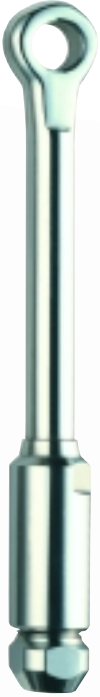


**STA-LOK LONG EYE**

**METRIC WIRE**

Reference 078

Cat Ref	Wire mm	A	B	C	H
078-05	5	106	83	7.5	9.8
078-06-3/8	6	126	103	9.5	9.8
078-06	6	126	103	9.5	11.5
078-06-1/2	6	147	122	12.0	13.0
078-07	7	147	122	12.0	13.0
078-08	8	149	122	12.0	13.0
078-08-5/8	8	175	142	13.5	16.0
078-10	10	175	142	13.5	16.0
078-11	11	254	212	19.0	19.5
078-12	12	254	212	19.0	19.5

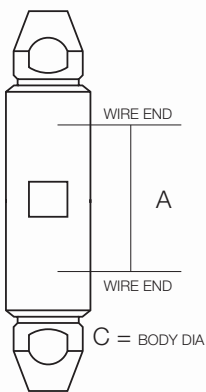


**STA-LOK STAY CONNECTOR**

**METRIC WIRE**

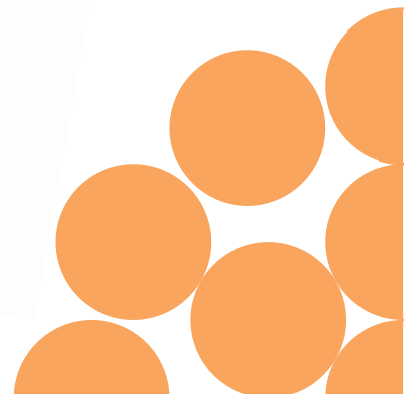
Reference 072

Cat Ref	Wire mm	A	C
072-04	4	11	14.3
072-05	5	14	15.9
072-06	6	16	19.0
072-07	7	19	22.2
072-08	8	19	25.4
072-10	10	19	28.6
072-11	11	25	34.9
072-12	12	25	34.9



A double ended terminal designed to join two pieces of wire together.

An effective way of repairing stays and shrouds without replacing metres of stainless steel rope.



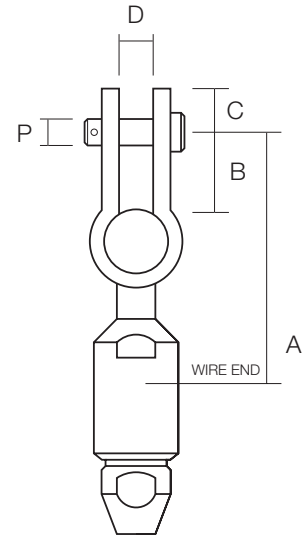
**STA-LOK TOGGLE FORK**


METRIC WIRE

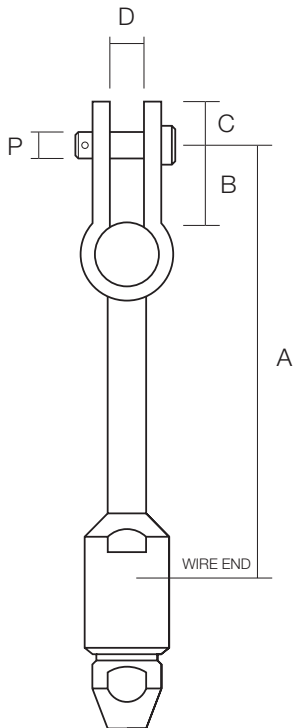
Reference 050



Cat Ref	Wire mm	A	B	C	D	P
050-04	4	48.0	19	10	8.4	7.9
050-05	5	56.0	21	11	9.9	9.5
050-06-3/8	6	56.0	21	11	9.9	9.5
050-06	6	61.0	25	15	11.5	11.1
050-07	7	70.0	28	16	13.1	12.7
050-08-1/2	8	72.0	28	16	13.1	12.7
050-08-5/8	8	87.0	33	20	16.3	16.0
050-10	10	87.0	33	20	16.3	16.0
050-10-3/4	10	94.0	34	25	19.1	18.5
050-12	12	104.0	34	25	19.1	18.5



 Unique toggle action allows full articulation in two planes.



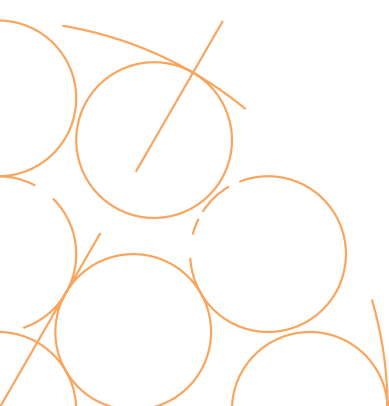
**STA-LOK LONG TOGGLE FORK**

METRIC WIRE

Reference 079

Cat Ref	Wire mm	A	B	C	D	P
079-04	4	98.5	19	10	8.4	7.9
079-05	5	120.8	21	11	9.9	9.5
079-06-3/8	6	122.8	21	11	9.9	9.5
079-06	6	140.2	25	15	11.5	11.1
079-07	7	148.4	28	16	13.1	12.7
079-08	8	166.1	28	16	13.1	12.7
079-08-5/8	8	198.8	33	20	16.3	16.0
079-10	10	213.8	33	20	16.3	16.0
079-10-3/4	10	266.5	34	25	19.1	18.5
079-12	12	281.5	34	25	19.1	18.5

When ordering, please state clearly if terminals are for use with Dyform wire rope





**TERMINAL & TERMINAL**

METRIC WIRE

Reference 043

Cat Ref	Wire mm	Wire End Wire End	Overall Dia	Min Break Load KGF
043-06	6	114	35	4080
043-07	7	112	38	6800
043-08	8	112	38	6800
043-10	10	121	41	9800
043-12	12	149	51	13430

**ELECTRICAL PROPERTIES**

**Impedance Measurement @ 15MHz**

Capacitance 16pF Resistance 400K

**D.C. Leakage Resistance @ 30Kv**

Greater than 10 G Ohms

**Voltage Proof Test**

Withstands 30 Kv applied for 2 hours without breakdown

**No change in 15MHz impedance after voltage proof test.**



**TERMINAL & EYE**

METRIC WIRE

Reference 091

Cat Ref	Wire mm	Wire End Hole Centre	Overall Dia	Min Break Load KGF
091-06	6	177	35	4080
091-07	7	189	38	6800
091-08	8	198	38	6800
091-10	10	216	41	9800
091-12	12	254	51	13430

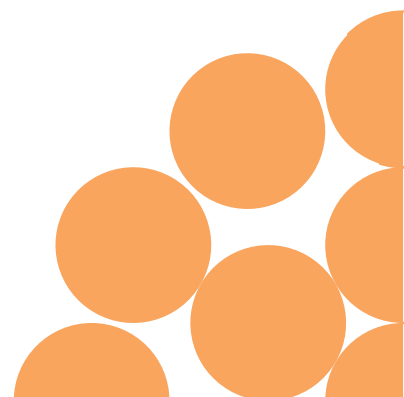


**TERMINAL & FORK**

METRIC WIRE

Reference 092

Cat Ref	Wire mm	Wire End Pin Centre	Overall Dia	Min Break Load KGF
092-06	6	184	35	4080
092-07	7	191	38	6800
092-08	8	199	38	6800
092-10	10	216	41	9800
092-12	12	260	51	13430



**SWAGE & SWAGE**

**METRIC WIRE**

Reference 093

Cat Ref	Wire mm	Wire End Wire End	Overall Dia	Min Break Load KGF
093-06	6	114	35	4080
093-07	7	112	38	6800
093-08	8	112	38	6800
093-10	10	121	41	9800
093-12	12	149	51	13430



**SWAGE & EYE**

**METRIC WIRE**

Reference 094

Cat Ref	Wire mm	Wire End Hole Centre	Overall Dia	Min Break Load KGF
094-06	6	230	35	4080
094-07	7	242	38	6800
094-08	8	255	38	6800
094-10	10	271	41	9800
094-12	12	325	51	13430



**SWAGE & FORK**

**METRIC WIRE**

Reference 095

Cat Ref	Wire mm	Wire End Pin Centre	Overall Dia	Min Break Load KGF
095-06	6	230	35	4080
095-07	7	245	38	6800
095-08	8	260	38	6800
095-10	10	273	41	9800
095-12	12	330	51	13430





## INSULATOR BODY

## METRIC WIRE

Reference 206

Cat Ref	Wire mm	Overall Dia	Min Break Load KGF
206-06	6	35	4080
206-07	7	38	6800
206-08	8	38	6800
206-10	10	41	9800
206-12	12	51	13430

Insulated Standing Rigging provides the ideal antenna for radio transmission and reception.

Sta-Lok Insulators have proven themselves over the years to be an effective and totally reliable method of converting yacht backstays into radio antenna.

The main body of the Sta-Lok Insulator consists of an ingenious steel assembly which is embedded in a black weather-proof nylon moulding, designed to exceed the breaking load of the back stay.

## ADAPTOR SCREW

## METRIC WIRE

Reference 207

Cat Ref	Wire mm	BSF Thread
207-06	6	5/8
207-07	7	3/4
207-08	8	3/4
207-10	10	7/8
207-12	12	1 1/8



For connecting Eye or Fork Parts to Insulator Body Part Ref 206.

## TERMINAL PART

## METRIC WIRE

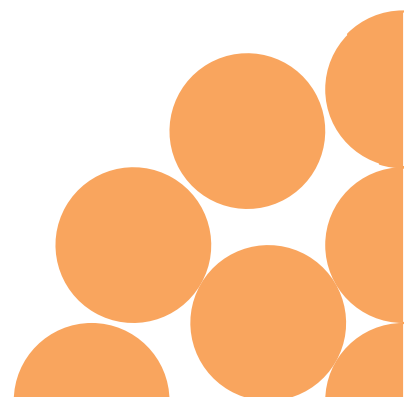
Reference 208

Cat Ref	Wire mm
208-06	6
227-07*	7
208-08	8
208-10	10
208-12	12



Terminal Part consists of Socket, Wedge and Former components.

\*227-07 This is a special Terminal Part for Insulators **only**.





**SWAGE PART**

Reference 203

**METRIC WIRE**

Cat Ref	Wire mm	BSF Thread
203-06	6	5/8
203-07	7	3/4
203-08	8	3/4
203-10	10	7/8
203-12	12	1 1/8

**EYE PART**

Reference 209

**METRIC WIRE**

Cat Ref	Wire mm	Hole Dia
209-06	6	13.0
209-07	7	13.0
209-08	8	13.0
209-10	10	16.0
209-12	12	19.5



For further dimensions of Fork and Eye parts, please refer to the appropriate tables on Sta-Lok terminals.

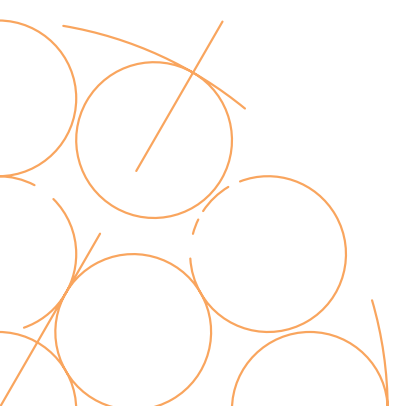
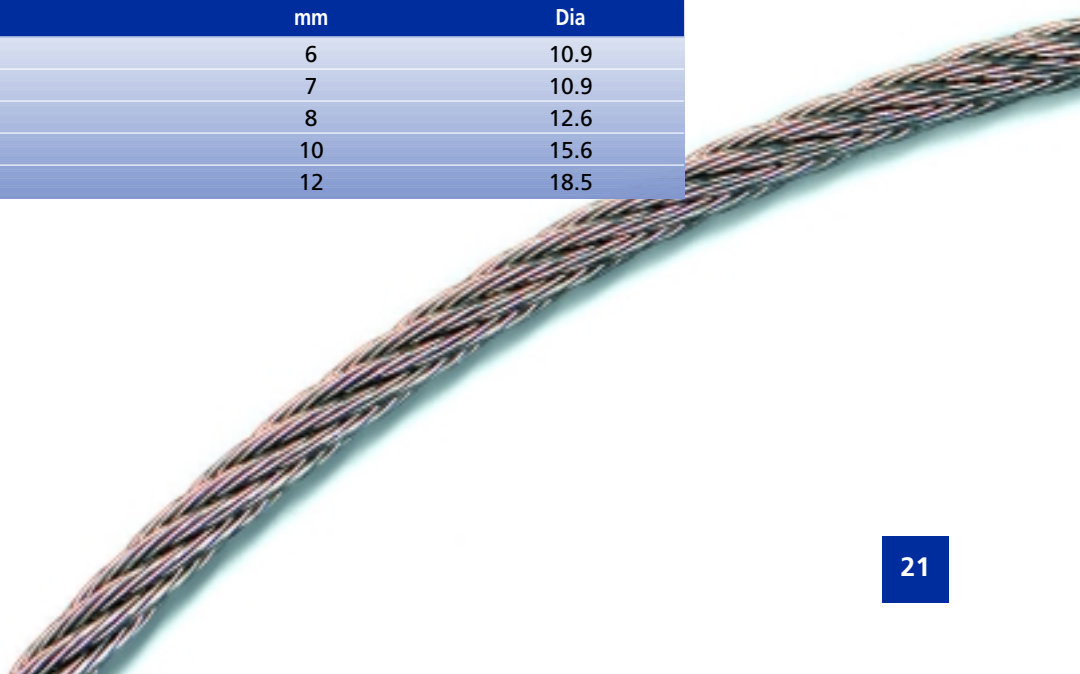


**FORK PART**

Reference 210

**METRIC WIRE**

Cat Ref	Wire mm	Pin Dia
210-06	6	10.9
210-07	7	10.9
210-08	8	12.6
210-10	10	15.6
210-12	12	18.5





A range of Sta-Lok Terminals has been carefully selected to repair the most common types of rigging failure.

Sta-Lok Terminals are easy to assemble using only simple hand tools.

A range of Long Terminals, connectors and turnbuckles can be used to repair stays and shrouds in a matter of minutes.

All Sta-Lok products exceed the breaking load of the wire rope.

**STANDARD SPARES KIT**

**METRIC WIRE**

Reference KA

Yacht rigging problems at sea can at best be dangerous and at worst life threatening. To cover the eventuality of rigging failure Sta-Lok Terminals have introduced the first ever Rigging Spares Kit.

Cat Ref	Wire mm	UNF Thread	Pin Hole
KA-05	5	3/8	9.8
KA-06	6	7/16	11.5
KA-07	7	1/2	13.0
KA-08	8	1/2	13.0
KA-08-5/8	8	5/8	16.0
KA-10	10	5/8	16.0
KA-12	12	3/4	19.5

Contents: 1 x Long Stud 1 x Long Eye 1 x Connector

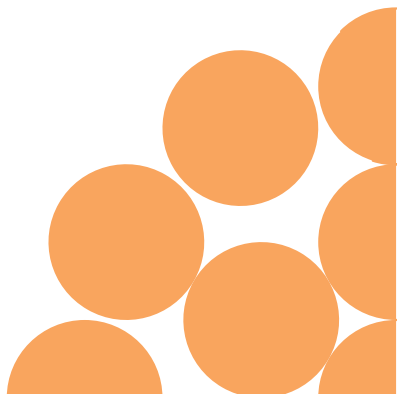
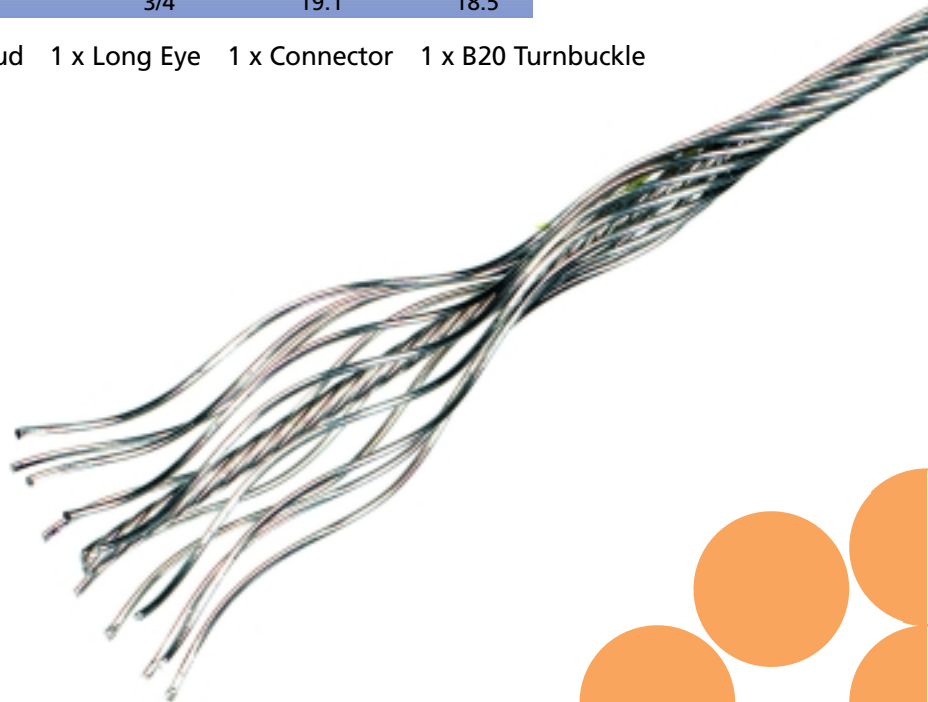
**DELUXE SPARES KIT**

**METRIC WIRE**

Reference KB

Cat Ref	Wire mm	UNF Thread	Toggle Width	Pin Dia
KB-05	5	3/8	9.9	9.5
KB-06	6	7/16	11.5	11.1
KB-07	7	1/2	13.1	12.7
KB-08	8	1/2	13.1	12.7
KB-08-5/8	8	5/8	16.3	16.0
KB-10	10	5/8	16.3	16.0
KB-12	12	3/4	19.1	18.5

Contents: 1 x Long Stud 1 x Long Eye 1 x Connector 1 x B20 Turnbuckle

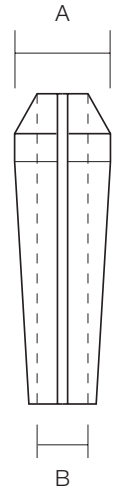


**STA-LOK WEDGE 1 x 19**

**METRIC WIRE**

Reference 126

Cat Ref	Wire mm	A	B	Package Quantity
126-03	3	4.11	1.9	5
126-04	4	5.54	2.5	5
126-05	5	6.68	3.2	5
126-06	6	8.41	3.8	5
126-07	7	9.35	4.5	5
126-08	8	10.92	5.1	2
126-10	10	13.49	6.4	2
126-12	12	16.41	7.7	1
126-14	14	19.33	8.8	1
126-16	16	22.56	10.2	1
126-19	19	26.97	11.9	1
126-22	22	30.73	13.9	1
126-26	26	34.65	15.9	1



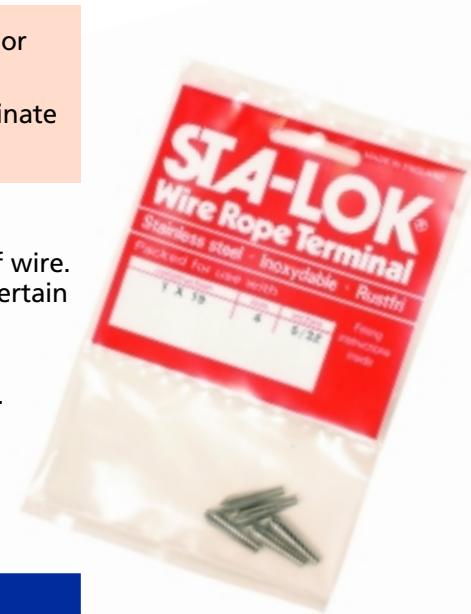
The standard 1 x 19 wedge **must not** be used for Dyform or compacted strand wire ropes.

A special wedge component has been developed to terminate Dyform wire ropes.

Wire ropes are available in Metric and Imperial sizes.

Sta-Lok terminals are suitable for terminating both types of wire. In some cases wedge components are interchangeable. In certain cases a **specific** Metric or Imperial wedge has to be used.

The following table has been produced to help distinguish between Sta-Lok wedges for Metric and Imperial wire sizes.



**IMPORTANT INFORMATION**

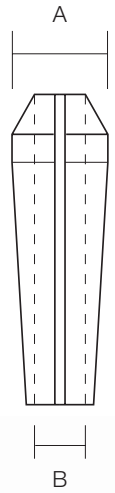
Wire mm	Wire inch	
3	1/8	Wedges are Identical
4	5/32	Wedges are Identical
5	3/16	Wedges are Different
6	1/4	Wedges are Different
7	9/32	Wedges are Identical
8	5/16	Wedges are Identical
10	3/8	Wedges are Different
11	7/16	Wedges are Identical
12	1/2	Wedges are Different
14	9/16	Wedges are Identical
16	5/8	Wedges are Identical
19	3/4	Wedges are Identical
22	7/8	Wedges are Identical
26	1	Wedges are Identical

**STA-LOK WEDGE DYFORM**

**METRIC WIRE**

Reference 154

Cat Ref	Construction	Wire mm	A	B	Package Quantity
154-04	1x7	4	4.42	1.6	5
154-05	1x19	5	6.10	3.2	5
154-06	1x19	6	8.08	3.6	5
154-07	1x19	7	8.76	4.2	5
154-08	1x19	8	9.78	4.8	2
154-10	1x19	10	12.14	6.0	2
154-12	1x19	12	15.62	7.5	1
154-14	1x25	14	19.61	10.1	1
154-16	1x25	16	22.86	11.9	1
154-19	1x31	19	26.42	13.3	1



For use with Dyform wire only.



**STA-LOK WEDGE 7 STRAND**

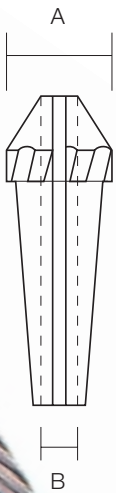
**METRIC WIRE**

Reference 127

Cat Ref	Wire mm	A	B	Package Quantity
127-03	3	4.74	1.3	5
127-04	4	6.43	1.6	5
127-05	5	7.62	2.0	5
127-06	6	9.78	2.3	5
127-07	7	11.43	2.6	5
127-08	8	12.70	3.2	2
127-10	10	15.95	3.7	2
127-12	12	19.05	4.8	1
127-14	14	23.16	5.5	1
127-16	16	26.97	6.8	1



Suitable for use with 7 x 7 and 7 x 19 wire construction.



**STA-LOK FORMER**

Reference 115



Cat Ref	Wire mm	Package Quantity
115-03	3	5
115-04	4	5
115-05	5	5
115-06	6	5
115-07	7	5
115-08	8	2
115-10	10	2
115-12	12	1
115-14	14	1
115-16	16	1
115-19	19	1
115-22	22	1
115-26	26	1

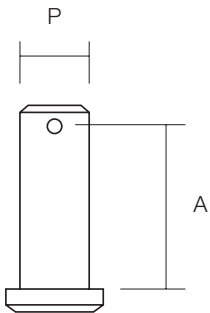
Suitable for use with all wire constructions.

**METRIC WIRE**



**STA-LOK FORK PIN**

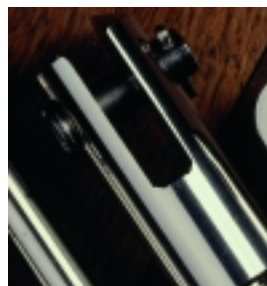
Reference 037



Cat Ref	Wire mm	A	P	Package Quantity
037-03	3	15.5	5.0	5
037-04	4	17.5	6.4	5
037-05	5	20.6	8.0	5
037-06	6	27.0	10.9	5
037-07	7	27.0	10.9	5
037-08	8	34.1	12.6	2
037-10	10	37.3	15.6	2
037-12	12	47.6	18.5	1
037-14	14	50.8	21.5	1
037-16	16	54.0	21.5	1
037-19	19	66.7	27.0	1
037-22	22	85.7	33.0	1
037-26	26	85.7	33.0	1

Pins for Sta-Lok forks reference 034.

**METRIC WIRE**



**SHORT SWAGE STUD**

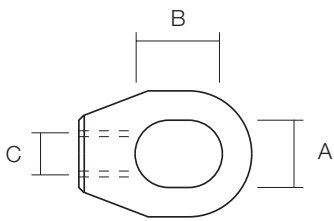
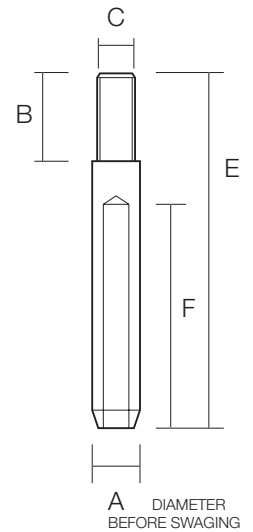
METRIC WIRE

Reference 051-SH



Cat Ref	Wire mm	A	B	E	F	C
051-04-SH	4	7.4	11.1	64	45	5/16
051-04-M8-SH	4	7.4	11.1	64	45	M8
051-05-SH	5	9.0	11.1	71	51	5/16
051-05-M8-SH	5	9.0	11.1	71	51	M8
051-06-SH	6	12.4	11.1	86	61	5/16
051-06-M8-SH	6	12.4	11.1	86	61	M8

Short swage studs are available with right hand thread only.



**SINGLE EYE**

METRIC WIRE

Reference GE1

Cat Ref	A	B	C Thread
GE1-516	16	19.4	5/16
GE1-M8	16	19.4	M8

Available with UNF and Metric threads.



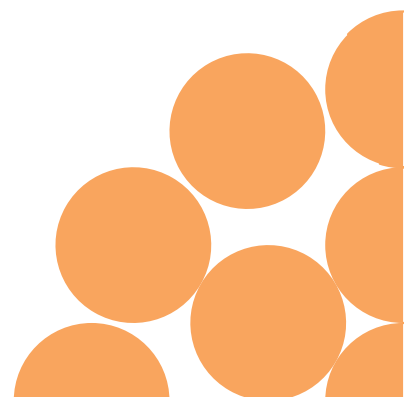
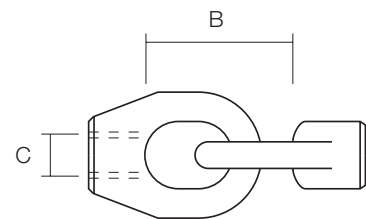
**INTERLINKED EYE**

METRIC WIRE

Reference GE2

Cat Ref	A	B	C Thread
GE2-516	16	38.8	5/16
GE2-M8	16	38.8	M8

Available with UNF and Metric threads.



**PELICAN HOOK**

METRIC WIRE

Reference PH

Cat Ref	A	Thread
PH-516	100	5/16
PH-M8	100	M8

Stainless steel grade 316.  
Supplied with right hand nut.

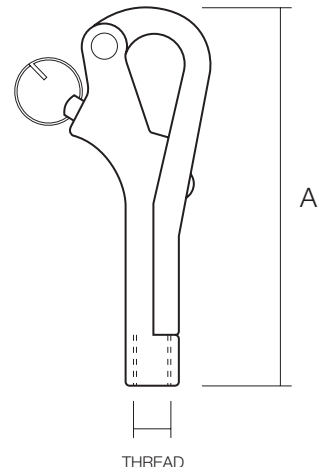


**PELICAN HOOK WITH  
STA-LOK STUD**

METRIC WIRE

Reference PH-036

Cat Ref	Wire mm	Thread
PH-0364 516	4	5/16
PH-0364 M8	4	M8
PH-0365 516	5	5/16
PH-0465 M8	5	M8



**PELICAN HOOK  
WITH SWAGE STUD**

METRIC WIRE

Reference PH-051

Cat Ref	Wire mm	Thread
PH-0514 516	4	5/16
PH-0514 M8	4	M8
PH-0515 516	5	5/16
PH-0515 M8	5	M8



All Pelican Hooks are available with UNF and Metric threads.

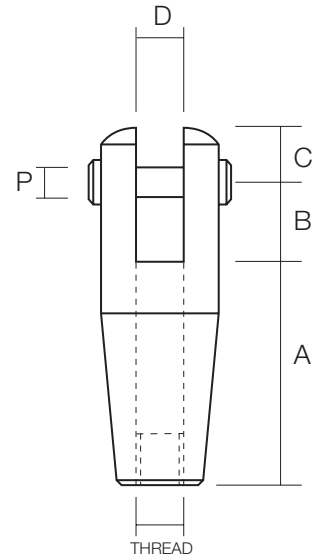
**STA-LOK TENSION FORK**

METRIC WIRE

Reference F34



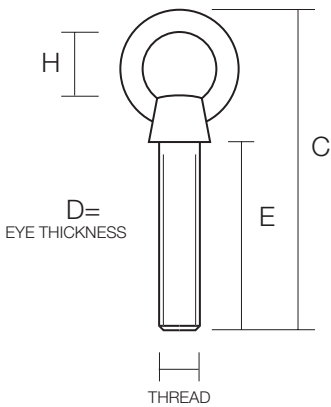
Cat Ref	Thread	A	B	C	D	P	Min Break Load KN
F34-03 L/R	1/4	38.5	10.0	8.5	6.4	6.3	15.1
F34-M6 L/R	M6	38.5	10.0	8.5	6.4	6.3	15.1
F34-04 L/R	5/16	52.7	14.7	10.3	8.0	7.9	21.3
F34-M8 L/R	M8	52.7	14.7	10.3	8.0	7.9	21.3
F34-05 L/R	3/8	57.6	18.0	11.4	9.5	9.4	41.4
F34-5M10 L/R	M10	57.6	18.0	11.4	9.5	9.4	41.4
F34-06 L/R	7/16	66.2	22.2	15.7	11.1	10.9	50.7
F34-6M10 L/R	M10	66.2	22.2	15.7	11.1	10.9	50.7



Supplied with Nut.



Tension Forks can be supplied individually or complete with:  
Swage Studs Reference 061 or Sta-Lok Stud Reference 036



**EYE BOLT**

METRIC WIRE

Reference EB

Cat Ref	Thread	C	D	E	H
EB-M6	M6	111	5.0	80	16
EB-M8	M8	142	7.0	100	20
EB-M10	M10	170	8.0	120	25
EB-M12	M12	200	9.5	140	30

Right hand thread only.



**EYE NUT**

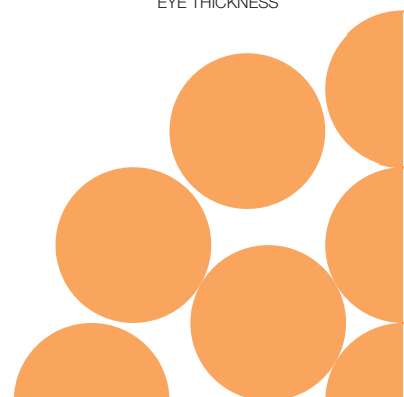
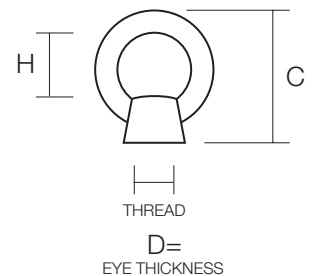
METRIC WIRE

Reference EN



Cat Ref	Thread mm	C	D	H
EN-M6	M6	26.5	5.5	15
EN-M8	M8	35.5	8.0	20
EN-M10	M10	44.5	10.0	25
EN-M12	M12	52.5	12.0	30

Right hand thread only.



**FORK & BLANK**

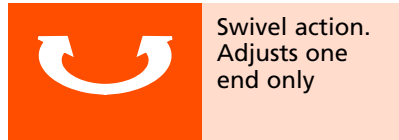
**METRIC WIRE**

Reference G30

Cat Ref	Thread	Fork Width	Pin Dia	Min Break Load KGF
G30-516	5/16	11.1	7.7	2118
G30-M8	M8	11.1	7.7	2009

The unique design of the Sta-Lok Guard Rail Adjuster provides weight and length reduction on conventional turnbuckles without compromise on quality or strength.

Tested stronger than the wire rope.



**FORK & STA-LOK**

**METRIC WIRE**

Reference G26

Cat Ref	Wire mm	Thread	Fully Open	Fully Closed	Fork Width	Pin Dia	Min Break Load KGF
G26-04	4	5/16	144	117	11.1	7.7	2118
G26-04-M8	4	M8	144	117	11.1	7.7	2009
G26-05	5	5/16	144	117	11.1	7.7	2118
G26-05-M8	5	M8	144	117	11.1	7.7	2009

All Guard Rail Adjusters are available with UNF and Metric threads.



**FORK & SWAGE**

**METRIC WIRE**

Reference G28

Cat Ref	Wire mm	Thread	Fully Open	Fully Closed	Fork Width	Pin Dia	Min Break Load KGF
G28-04	4	5/16	160	125	11.1	7.7	2118
G28-04-M8	4	M8	160	125	11.1	7.7	2009
G28-05	5	5/16	160	125	11.1	7.7	2118
G28-05-M8	5	M8	160	125	11.1	7.7	2009



**FORK & FORK**

**METRIC WIRE**

Reference G31

Cat Ref	Thread	Fully Open	Fully Closed	Fork Width	Pin Dia	Min Break Load KGF
G31-516	5/16	160	125	11.1	7.7	2118
G31-M8	M8	160	125	11.1	7.7	2009



**TOGGLE AND BLANK**

**METRIC THREAD**

Reference B20



Cat Ref	Thread	Toggle Width	Pin Diameter	Min Break Load KGF
B20-14	1/4	6.4	6.4	1319
B20-M6	M6	6.4	6.4	1094
B20-516	5/16	8.4	7.9	2118
B20-M8	M8	8.4	7.9	2009
B20-38	3/8	9.9	9.5	3255
B20-M10	M10	9.9	9.5	3199
B20-716	7/16	11.5	11.1	4388
B20-12	1/2	13.1	12.7	5970
B20-M12	M12	13.1	12.7	4668
B20-58	5/8	16.3	16.0	9613
B20-M16	M16	16.3	16.0	8822
B20-34	3/4	19.1	18.5	14061
B20-M20	M20	19.1	18.5	13779

FORGED FROM HIGH TENSILE BRONZE

For further dimensions on Strap Toggle Ends and Fork Ends refer to page 53 and 54.

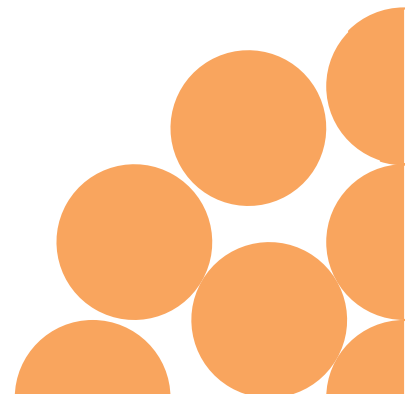
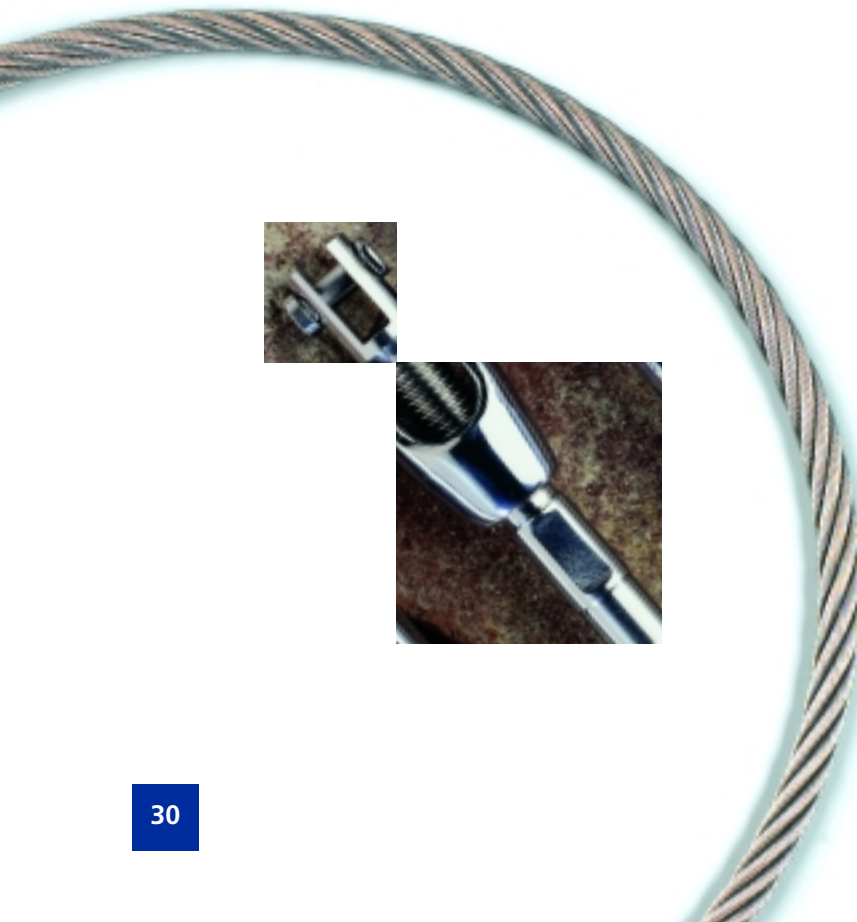
**The Sta-Lok Bronze Turnbuckle**

The proven design of the Sta-Lok Forged Turnbuckle exceeds the breaking load of today's high strength compacted strand wire ropes.

Forged from high tensile Bronze alloy. The aerodynamic design of this turnbuckle provides one of the strongest and most elegant bronze turnbuckles on the world market today.

Highly finished in polished chromium, Sta-Lok Bronze Turnbuckles are available with a wide range of stainless steel ends to suit all rigging applications.

All Bronze Turnbuckles are available with UNF and Metric threads.



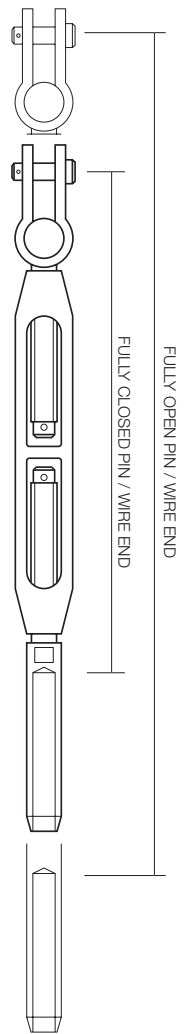


**TOGGLE & SWAGE**

**METRIC WIRE**

Reference B24

Cat Ref	Wire mm	Thread	Fully Open	Fully Closed	Toggle Width	Pin Dia	Min Break Load KGF
B24-03	3	1/4	240	160	6.4	6.4	1319
B24-03-M6	3	M6	240	160	6.4	6.4	1094
B24-144	4	1/4	246	167	6.4	6.4	1319
B24-04-M6	4	M6	246	167	6.4	6.4	1094
B24-04	4	5/16	266	180	8.4	7.9	2118
B24-04-M8	4	M8	266	180	8.4	7.9	2009
B24-5165	5	5/16	260	174	8.4	7.9	2118
B24-05-M8	5	M8	260	174	8.4	7.9	2009
B24-05	5	3/8	286	194	9.9	9.5	3255
B24-05-M10	5	M10	286	194	9.9	9.5	3199
B24-386	6	3/8	295	203	9.9	9.5	3255
B24-06-M10	6	M10	295	203	9.9	9.5	3199
B24-06	6	7/16	330	225	11.5	11.1	4388
B24-7167	7	7/16	320	218	11.5	11.1	4388
B24-07	7	1/2	344	239	13.1	12.7	5970
B24-07-M12	7	M12	344	239	13.1	12.7	4668
B24-08	8	1/2	353	248	13.1	12.7	5970
B24-08-M12	8	M12	353	248	13.1	12.7	4668
B24-588	8	5/8	416	289	16.3	16.0	9613
B24-08-M16	8	M16	416	289	16.3	16.0	8822
B24-10	10	5/8	416	289	16.3	16.0	9613
B24-10-M16	10	M16	416	289	16.3	16.0	8822
B24-12	12	3/4	523	355	19.1	18.5	14061
B24-12-M20	12	M20	523	355	19.1	18.5	13779



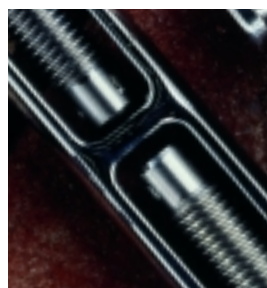
**TOGGLE & FORK**

**METRIC WIRE**

Reference B21

Cat Ref	Thread	Fully Open	Fully Closed	Fork Width	Pin Dia	Min Break Load KGF
B21-14	1/4	238	162	6.4	6.2	1319
B21-M6	M6	238	162	6.4	6.2	1094
B21-516	5/16	268	181	7.9	7.7	2118
B21-M8	M8	268	181	7.9	7.7	2009
B21-38	3/8	296	204	9.5	9.3	3255
B21-M10	M10	296	204	9.5	9.3	3199
B21-716	7/16	340	238	11.1	10.9	4388
B21-12	1/2	365	264	12.7	12.6	5970
B21-M12	M12	365	264	12.7	12.6	4668
B21-58	5/8	436	311	15.9	15.6	9613
B21-M16	M16	436	311	15.9	15.6	8822
B21-34	3/4	567	380	19.1	18.5	14061
B21-M20	M20	567	380	19.1	18.5	13779

FORGED FROM HIGH TENSILE BRONZE



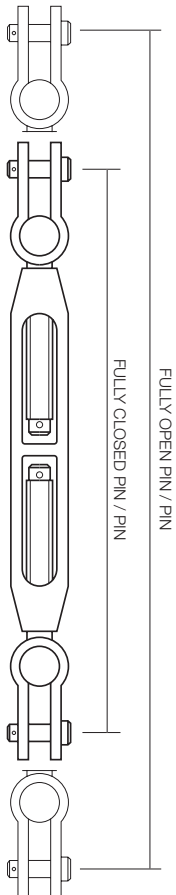
**TOGGLE & STA-LOK**

**METRIC WIRE**

Reference B22

Cat Ref	Wire mm	Thread	Fully Open	Fully Closed	Toggle Width	Pin Dia	Min Break Load KGF
B22-03	3	1/4	234	154	6.4	6.4	1319
B22-03-M6	3	M6	234	154	6.4	6.4	1094
B22-144	4	1/4	234	154	6.4	6.4	1319
B22-04-M6	4	M6	234	154	6.4	6.4	1094
B22-04	4	5/16	250	170	8.4	7.9	2118
B22-04-M8	4	M8	250	170	8.4	7.9	2009
B22-5165	5	5/16	250	170	8.4	7.9	2118
B22-05-M8	5	M8	250	170	8.4	7.9	2009
B22-05	5	3/8	282	189	9.9	9.5	3255
B22-05-M10	5	M10	2282	189	9.9	9.5	3199
B22-386	6	3/8	284	191	9.9	9.5	3255
B22-06-M10	6	M10	284	191	9.9	9.5	3199
B22-06	6	7/16	322	217	11.5	11.1	4388
B22-06-M12	6	M12	344	237	13.1	12.7	4668
B22-7167	7	7/16	322	217	11.5	11.1	4388
B22-07	7	1/2	344	237	13.1	12.7	5970
B22-07-M12	7	M12	344	237	13.1	12.7	4668
B22-08	8	1/2	344	237	13.1	12.7	5970
B22-08-M12	8	M12	344	237	13.1	12.7	4668
B22-588	8	5/8	403	283	16.3	16.0	9613
B22-08-M16	8	M16	403	283	16.3	16.0	8822
B22-10	10	5/8	403	283	16.3	16.0	9613
B22-10-M16	10	M16	403	283	16.3	16.0	8822
B22-12	12	3/4	500	355	19.1	18.5	14061
B22-12-M20	12	M20	500	355	19.1	18.5	13779

FORGED FROM HIGH TENSILE BRONZE

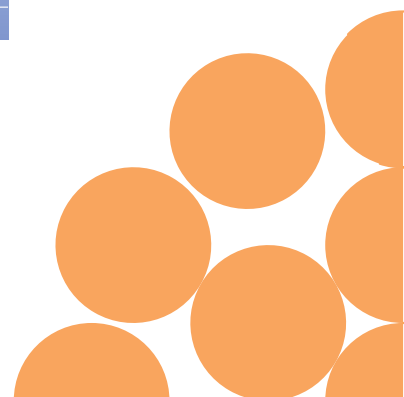


**TOGGLE & TOGGLE**

**METRIC WIRE**

Reference B41

Cat Ref	Thread	Fully Open	Fully Closed	Toggle Width	Pin Dia	Min Break Load KGF
B41-14	1/4	248	172	6.4	6.4	1319
B41-M6	M6	248	172	6.4	6.4	1094
B41-516	5/16	280	193	8.4	7.9	2118
B41-M8	M8	280	193	8.4	7.9	2009
B41-38	3/8	308	216	9.9	9.5	3255
B41-M10	M10	308	216	9.9	9.5	3199
B41-716	7/16	349	245	11.5	11.1	4388
B41-12	1/2	379	271	13.1	12.7	5970
B41-M12	M12	379	271	13.1	12.7	4668
B41-58	5/8	451	324	16.3	16.0	9613
B41-M16	M16	451	324	16.3	16.0	8822
B41-34	3/4	586	398	19.1	18.5	14061
B41-M20	M20	586	398	19.1	18.5	13779





**FORK & BLANK**

Reference B30

**METRIC WIRE**

Cat Ref	Wire mm	Thread	Fork Width	Pin Dia	Min Break Load KGF
B30-14	3-4	1/4	6.4	6.2	1319
B30-M6	3-4	M6	6.3	6.2	1094
B30-516	4-5	5/16	7.9	7.7	2118
B30-M8	4-5	M8	8.0	7.9	2009
B30-38	5-6	3/8	9.5	9.3	3255
B30-M10	5-6	M10	9.5	9.4	3199
B30-716	6-7	7/16	11.1	10.9	4388
B30-12	7-8	1/2	12.7	12.6	5970
B30-M12	6-7-8	M12	12.7	12.7	4668
B30-58	8-10	5/8	15.9	15.6	9613
B30-M16	8-10	M16	16.0	15.6	8822
B30-34	12	3/4	19.1	18.5	14061
B30-M20	10-12	M20	19.1	18.5	13779

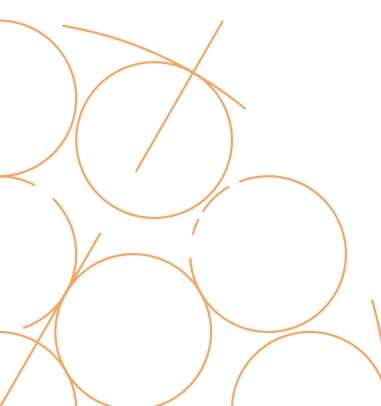
FORGED FROM HIGH TENSILE BRONZE

**FORK & SWAGE**

Reference B28

**METRIC WIRE**

Cat Ref	Wire mm	Thread	Fully Open	Fully Closed	Fork Width	Pin Dia	Min Break Load KGF
B28-03	3	1/4	221	145	6.4	6.2	1319
B28-03-M6	3	M6	221	145	6.4	6.2	1094
B28-144	4	1/4	236	157	6.4	6.2	1319
B28-04-M6	4	M6	236	157	6.4	6.2	1094
B28-04	4	5/16	254	169	7.9	7.7	2118
B28-04-M8	4	M8	254	169	7.9	7.7	2009
B28-5165	5	5/16	248	164	7.9	7.7	2118
B28-05-M8	5	M8	248	164	7.9	7.7	2009
B28-05	5	3/8	273	181	9.5	9.3	3255
B28-05-M10	5	M10	273	181	9.5	9.3	3199
B28-386	6	3/8	282	190	9.5	9.3	3255
B28-06-M10	6	M10	282	190	9.5	9.3	3199
B28-06	6	7/16	315	210	11.1	10.9	4388
B28-7167	7	7/16	315	210	11.1	10.9	4388
B28-07	7	1/2	355	227	12.7	12.6	5970
B28-07-M12	7	M12	355	227	12.7	12.6	4668
B28-08	8	1/2	344	237	12.7	12.6	5970
B28-08-M12	8	M12	344	237	12.7	12.6	4668
B28-588	8	5/8	395	272	15.9	15.6	9613
B28-08-M16	8	M16	395	272	15.9	15.6	8822
B28-10	10	5/8	395	272	15.9	15.6	9613
B28-10-M16	10	M16	395	272	15.9	15.6	8822
B28-12	12	3/4	500	334	19.1	18.5	14061
B28-12-M20	12	M20	500	334	19.1	18.5	13779



**FORK & STA-LOK**

**METRIC WIRE**

Reference B26



Cat Ref	Wire mm	Thread	Fully Open	Fully Closed	Fork Width	Pin Dia	Min Break Load KGF
B26-03	3	1/4	224	144	6.4	6.2	1319
B26-03-M6	3	M6	224	144	6.4	6.2	1094
B26-144	4	1/4	224	144	6.4	6.2	1319
B26-04-M6	4	M6	224	144	6.4	6.2	1094
B26-04	4	5/16	237	159	7.9	7.7	2118
B26-04-M8	4	M8	237	159	7.9	7.7	2009
B26-5165	5	5/16	236	158	7.9	7.7	2118
B26-05-M8	5	M8	236	158	7.9	7.7	2009
B26-05	5	3/8	267	175	9.5	9.3	3255
B26-05-M10	5	M10	267	175	9.5	9.3	3199
B26-386	6	3/8	269	177	9.5	9.3	3255
B26-06-M10	6	M10	269	177	9.5	9.3	3199
B26-06	6	7/16	322	217	11.1	10.9	4388
B26-06-M12	6	M12	330	223	12.7	12.6	4668
B26-7167	7	7/16	322	217	10.9	12.6	4388
B26-07	7	1/2	330	233	12.7	12.6	5970
B26-07-M12	7	M12	330	223	12.7	12.6	4668
B26-08	8	1/2	330	233	12.7	12.6	5970
B26-08-M12	8	M12	330	223	12.7	12.6	4668
B26-588	8	5/8	384	264	15.9	15.6	9613
B26-08-M16	8	M16	384	264	15.9	15.6	8822
B26-10	10	5/8	384	264	15.9	15.6	9613
B26-10-M16	10	M16	384	264	15.9	15.6	8822
B26-12	12	3/4	520	332	19.1	18.5	14061
B26-12-M20	12	M20	519	332	19.1	18.5	13779

FORGED FROM HIGH TENSILE BRONZE

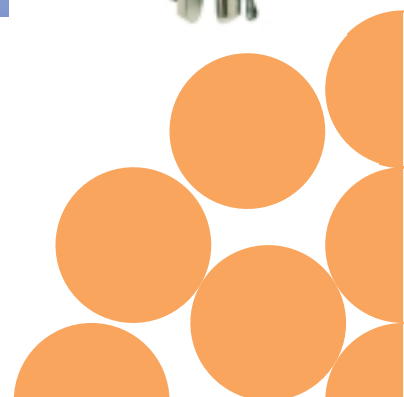
**FORK & FORK**

**METRIC WIRE**

Reference B31



Cat Ref	Thread	Fully Open	Fully Closed	Fork Width	Pin Dia	Min Break Load KGF
B31-14	1/4	228	150	6.4	6.2	1319
B31-M6	M6	228	150	6.4	6.2	1094
B31-516	5/16	254	172	7.9	7.7	2118
B31-M8	M8	254	172	7.9	7.7	2009
B31-38	3/8	282	191	9.5	9.3	3255
B31-M10	M10	282	191	9.5	9.3	3199
B31-716	7/16	330	228	11.1	10.9	4388
B31-12	1/2	355	252	12.7	12.6	5970
B31-M12	M12	355	252	12.7	12.6	4668
B31-58	5/8	412	290	15.9	15.6	9613
B31-M16	M16	412	290	15.9	15.6	8822
B31-34	3/4	528	361	19.1	18.5	14061
B31-M20	M20	528	361	19.1	18.5	13779



**FORK & FORK**

**METRIC WIRE**

Reference NB31

Cat Ref	Wire mm	UNF Thread	Fully Open	Fully Closed	Fork Width	Pin Dia	Min Break Load KGF
NB31-14	3-4	1/4	228	150	6.4	6.2	1319
NB31-516	4-5	5/16	254	172	7.9	7.7	2118
NB31-38	5-6	3/8	282	191	9.5	9.3	3255
NB31-716	6-7	7/16	330	228	11.1	10.9	4388
NB31-12	7-8	1/2	355	252	12.7	12.6	5970
NB31-58	8-10	5/8	412	290	15.9	15.6	9613
NB31-34	12	3/4	528	361	19.1	18.5	14061

Natural bronze finish Not chromium plated

FORGED FROM HIGH TENSILE BRONZE

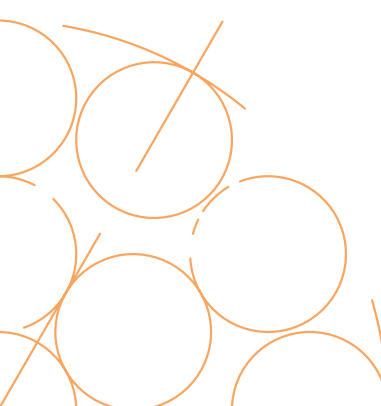
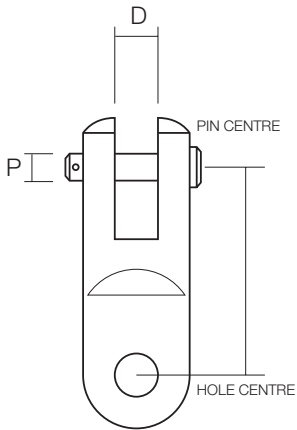


**TRADITIONAL BRONZE TOGGLE METRIC WIRE**

Reference NBT

Cat Ref	Pin Centre	Fork Width	Pin Dia
NBT-14	28	6.4	6.2
NBT-516	38	7.9	7.7
NBT-38	44	9.5	9.3
NBT-716	58	11.1	10.9
NBT-12	68	12.7	12.6
NBT-58	70	15.9	15.6
NBT-34	82	19.1	18.5

Machined from solid bronze.



**TOGGLE & BLANK**

**METRIC WIRE**

Reference ST20



Cat Ref	Thread	Toggle Width	Pin Dia	Min Break Load KGF
ST20-14	1/4	6.4	6.4	1319
ST20-M6	M6	6.4	6.4	1094
ST20-516	5/16	8.4	7.9	2118
ST20-M8	M8	8.4	7.9	2009
ST20-38	3/8	9.9	9.5	3255
ST20-M10	M10	9.9	9.5	3199

Supplied with right hand nut.

**TOGGLE & STA-LOK**

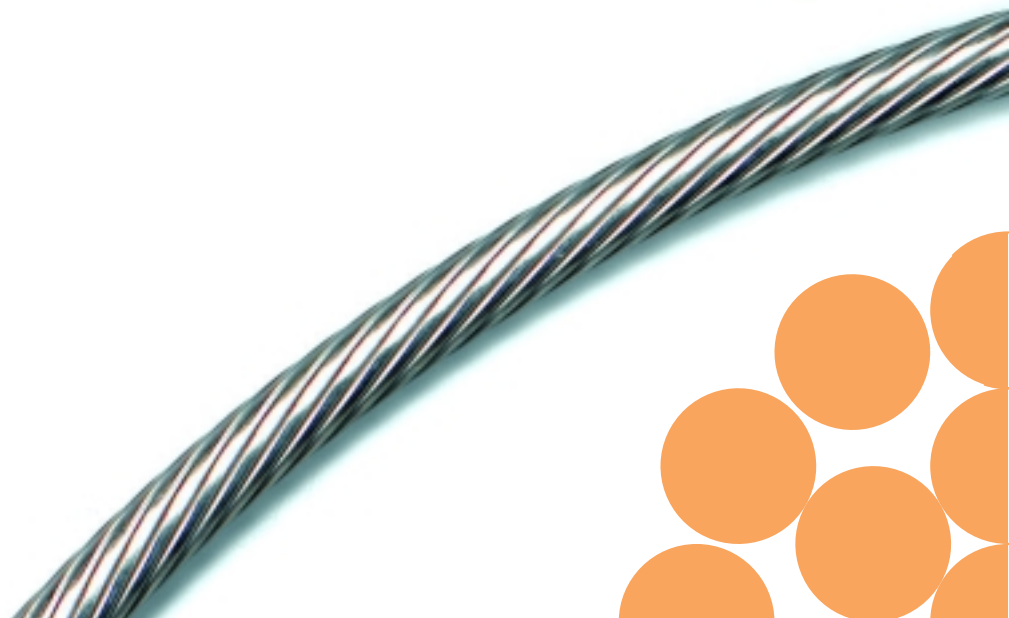
**METRIC WIRE**

Reference ST22



Cat Ref	Wire mm	Thread	Fully Open	Fully Closed	Toggle Width	Pin Dia	Min Break Load KGF
ST22-03	3	1/4	206	145	6.4	6.4	1319
ST22-03-M6	3	M6	206	145	6.4	6.4	1094
ST22-144	4	1/4	210	145	6.4	6.4	1319
ST22-04-M6	4	M6	210	145	6.4	6.4	1094
ST22-04	4	5/16	223	163	8.4	7.9	2118
ST22-04-M8	4	M8	223	163	8.4	7.9	2009
ST22-5165	5	5/16	230	168	8.4	7.9	2118
ST22-05-M8	5	M8	230	168	8.4	7.9	2009
ST22-05	5	3/8	263	193	9.9	9.5	3255
ST22-05-M10	5	M10	263	193	9.9	9.5	3199
ST22-386	6	3/8	268	198	9.9	9.5	3255
ST22-06-M10	6	M10	280	198	9.9	9.5	3199

Stainless steel turnbuckles are available with UNF and Metric threads unless stated.



**TOGGLE & SWAGE**

**METRIC WIRE**

Reference ST24



Cat Ref	Wire mm	Thread	Fully Open	Fully Closed	Toggle Width	Pin Dia	Min Break Load KGF
ST24-03	3	1/4	213	145	6.4	6.4	1319
ST24-03-M6	3	M6	213	145	6.4	6.4	1094
ST24-144	4	1/4	213	145	6.4	6.4	1319
ST24-04-M6	4	M6	213	145	6.4	6.4	1094
ST24-04	4	5/16	243	173	8.4	7.9	2118
ST24-04-M8	4	M8	243	173	8.4	7.9	2009
ST24-5165	5	5/16	243	173	8.4	7.9	2118
ST24-05-M8	5	M8	243	173	8.4	7.9	2009
ST24-05	5	3/8	290	200	9.9	9.5	3255
ST24-05-M10	5	M10	290	200	9.9	9.5	3199
ST24-386	6	3/8	295	205	9.9	9.5	3255
ST24-06-M10	6	M10	295	205	9.9	9.5	3199

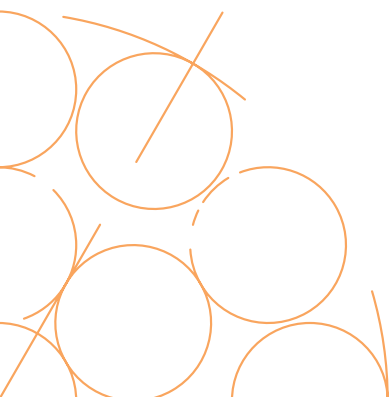
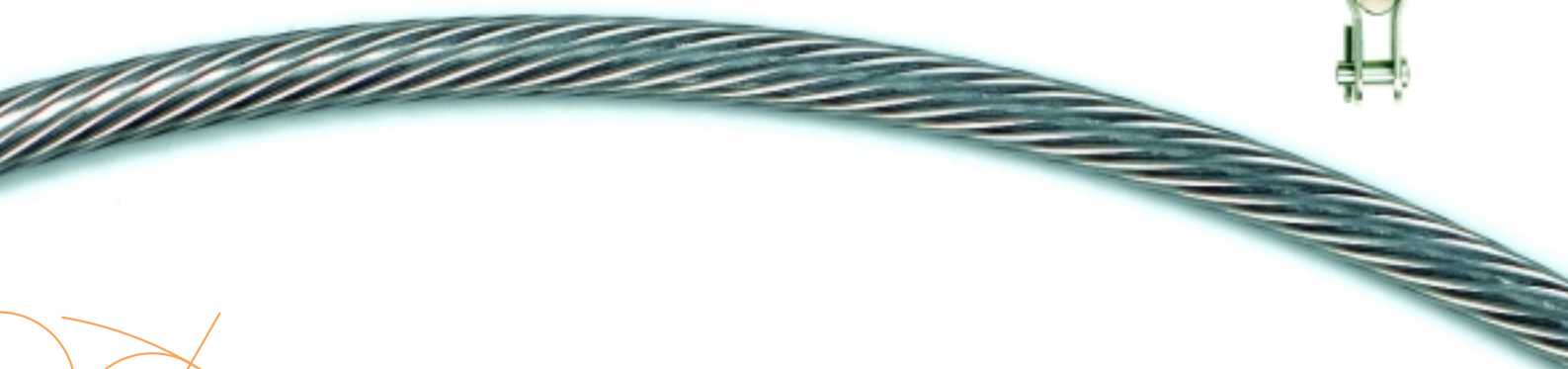
**TOGGLE & MACHINED FORK**

**METRIC WIRE**

Reference ST21



Cat Ref	Thread	Fully Open	Fully Closed	Fork Width	Pin Dia	Min Break Load KGF
ST21-14	1/4	218	150	6.4	6.2	1319
ST21-M6	M6	218	150	6.4	6.2	1094
ST21-516	5/16	248	178	7.9	7.7	2118
ST21-M8	M8	248	178	7.9	7.7	2009
ST21-38	3/8	300	210	9.5	9.3	3255
ST21-M10	M10	300	210	9.5	9.3	3199



**TOGGLE & WELDED FORK**

METRIC WIRE

Reference WT21

Cat Ref	Metric Thread	Fully Open	Fully Closed	Fork Width	Pin Dia	Min Break Load KGF
WT21-M6	M6	218	148	8.0	5.9	1094
WT21-M8	M8	250	175	11.0	7.9	2009
WT21-M10	M10	300	210	12.0	8.9	3199

Available with Metric threads only.

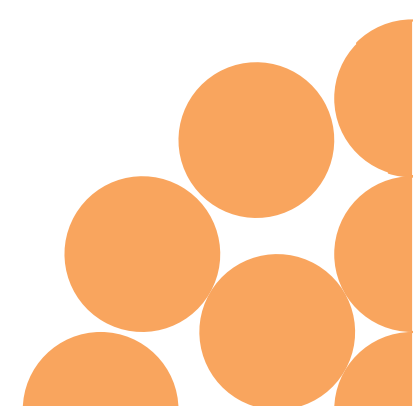
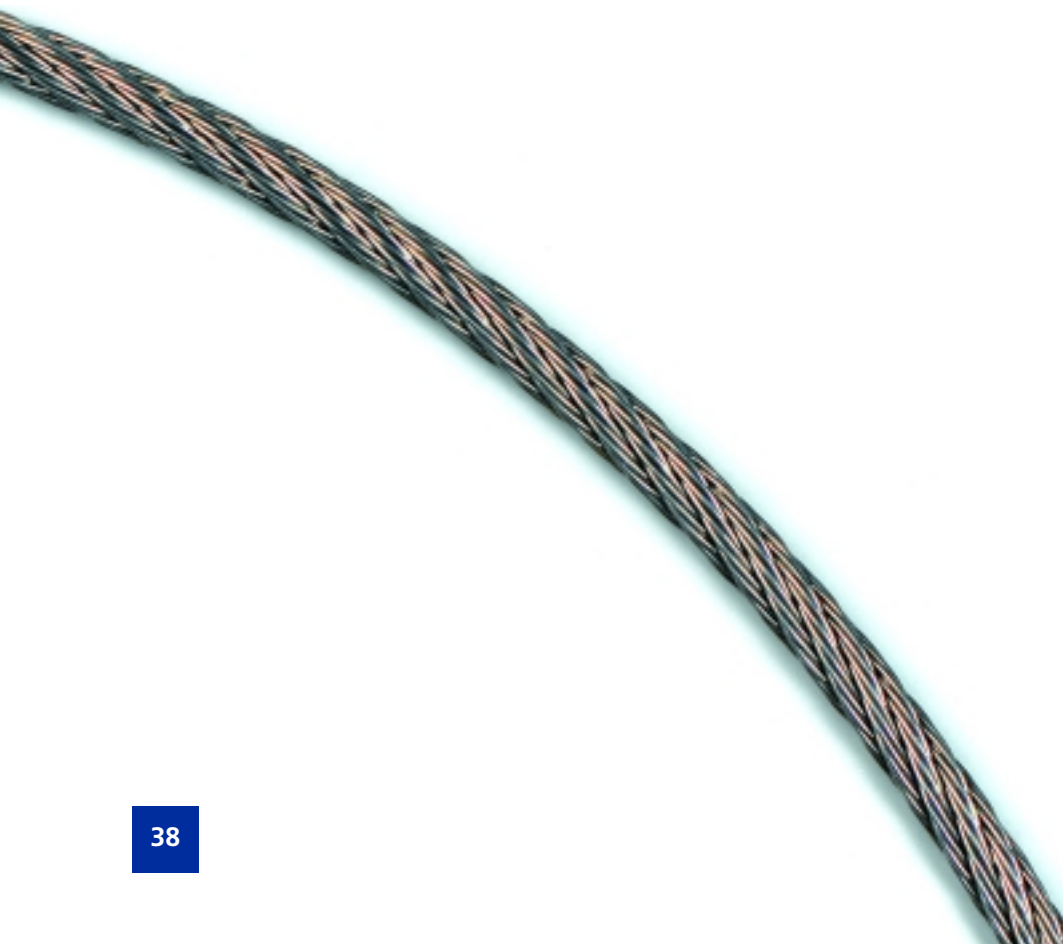


**TOGGLE & TOGGLE**

METRIC WIRE

Reference ST41

Cat Ref	Thread	Fully Open	Fully Closed	Toggle Width	Pin Dia	Min Break Load KGF
ST41-14	1/4	224	156	6.4	6.4	1319
ST41-M6	M6	224	156	6.4	6.4	1094
ST41-5/16	5/16	260	185	8.4	7.9	2118
ST41-M8	M8	260	185	8.4	7.9	2009
ST41-3/8	3/8	310	220	9.9	9.5	3255
ST41-M10	M10	310	220	9.9	9.5	3199



**MACHINED FORK & BLANK**

METRIC WIRE

Reference ST30



Cat Ref	Thread	Fork Width	Pin Dia	Min Break Load KGF
ST30-14	1/4	6.4	6.2	1319
ST30-M6	M6	6.4	6.2	1094
ST30-516	5/16	7.9	7.7	2118
ST30-M8	M8	7.9	7.7	2009
ST30-38	3/8	9.5	9.3	3255
ST30-M10	M10	9.5	9.3	3199

Supplied with right hand nut.

**MACHINED FORK & STA-LOK**

METRIC WIRE

Reference ST26

Cat Ref	Wire mm	Thread	Fully Open	Fully Closed	Fork Width	Pin Dia	Min Break Load KGF
ST26-03	3	1/4	196	135	6.4	6.2	1319
ST26-03-M6	3	M6	196	135	6.4	6.2	1094
ST26-144	4	1/4	200	135	6.4	6.2	1319
ST26-04-M6	4	M6	200	135	6.4	6.2	1094
ST26-04	4	5/16	210	150	7.9	7.7	2118
ST26-04-M8	4	M8	210	150	7.9	7.7	2009
ST26-05-516	5	5/16	217	155	7.9	7.7	2009
ST26-05-M8	5	M8	217	155	7.9	7.7	2009
ST26-05	5	3/8	248	180	9.5	9.3	3255
ST26-05-M10	5	M10	262	180	9.5	9.3	3199
ST26-386	6	3/8	253	185	9.5	9.3	3255
ST26-06-M10	6	M10	265	185	9.5	9.3	3199





**MACHINED FORK & SWAGE**

**METRIC WIRE**

Reference ST28

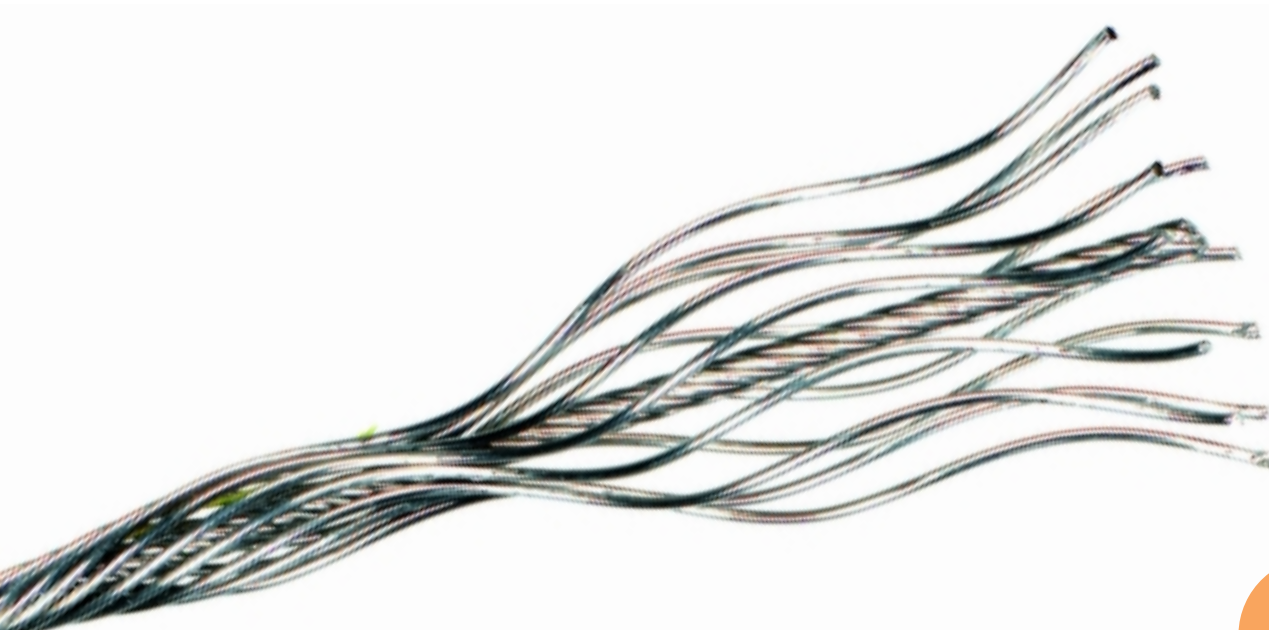
Cat Ref	Wire mm	Thread	Fully Open	Fully Closed	Fork Width	Pin Dia	Min Break Load KGF
ST28-03	3	1/4	203	135	6.4	6.2	1319
ST28-03-M6	3	M6	203	135	6.4	6.2	1094
ST28-144	4	1/4	203	135	6.4	6.2	1319
ST28-04-M6	4	M6	203	135	6.4	6.2	1094
ST28-04	4	5/16	230	160	7.9	7.7	2118
ST28-04-M8	4	M8	230	160	7.9	7.7	2009
ST28-05-516	5	5/16	230	160	7.9	7.7	2118
ST28-05-M8	5	M8	230	160	7.9	7.7	2009
ST28-05	5	3/8	275	185	7.9	7.7	3255
ST28-05-M10	5	M10	275	185	9.5	9.3	3199
ST28-386	6	3/8	280	190	9.5	9.3	3255
ST28-06-M10	6	M10	280	190	9.5	9.3	3199

**MACHINED FORK & FORK**

**METRIC WIRE**

Reference ST31

Cat Ref	Thread	Fully Open	Fully Closed	Fork Width	Pin Dia	Min Break Load KGF
ST31-14	1/4	208	140	6.4	6.2	1319
ST31-M6	M6	208	140	6.4	6.2	1094
ST31-516	5/16	235	165	7.9	7.7	2118
ST31-M8	M8	235	165	7.9	7.7	2009
ST31-38	3/8	285	195	9.5	9.3	3255
ST31-M10	M10	285	195	9.5	9.3	3199



**WELDED FORK & BLANK**

METRIC WIRE

Reference WT30-M



Cat Ref	Metric Thread	Fork Width	Pin Dia
WT30-M5	M5	7.0	4.9
WT30-M6	M6	8.0	5.9
WT30-M8	M8	11.0	7.9
WT30-M10	M10	12.0	8.9

Available with Metric threads only.  
Supplied with right hand nut.

**WELDED FORK & STA-LOK**

METRIC WIRE

Reference WT26-M

Cat Ref	Wire mm	Metric Thread	Fully Open	Fully Closed	Fork Width	Pin Dia
WT26-03-M6	3	M6	196	135	8.0	5.9
WT26-04-M6	4	M6	200	135	8.0	5.9
WT26-04-M8	4	M8	215	150	11.0	7.9
WT26-05-M8	5	M8	222	155	11.0	7.9
WT26-05-M10	5	M10	262	182	12.0	8.9
WT26-06-M10	6	M10	265	185	12.0	8.9

Available with Metric threads only.



**WELDED FORK & SWAGE**

**METRIC WIRE**

Reference WT28-M

Cat Ref	Wire mm	Metric Thread	Fully Open	Fully Closed	Fork Width	Pin Dia
WT28-02-M5	2	M5	171	115	7.0	4.9
WT28-03-M6	3	M6	203	135	8.0	5.9
WT28-04-M6	4	M6	203	135	8.0	5.9
WT28-04-M8	4	M8	235	160	11.0	7.9
WT28-05-M8	5	M8	235	160	11.0	7.9
WT28-05-M10	5	M10	280	190	12.0	8.9
WT28-06-M10	6	M10	284	194	12.0	8.9

Available with Metric threads only.



**WELDED FORK & FORK**

**METRIC WIRE**

Reference WT31-M

Cat Ref	Metric Thread	Fully Open	Fully Closed	Fork Width	Pin Dia
WT31-M5	M5	178	122	7.0	4.9
WT31-M6	M6	208	140	8.0	5.9
WT31-M8	M8	240	165	11.0	7.9
WT31-M10	M10	290	200	12.0	8.9

Available with Metric threads only.



**EYE & BLANK**

METRIC WIRE

Reference ST40-M

Cat Ref	Metric Thread	Eye Width	Hole Dia
ST40-M5	M5	3.0	5.8
ST40-M6	M6	4.0	6.5
ST40-M8	M8	5.0	8.6
ST40-M10	M10	6.0	11.0

Available with Metric threads only.

Supplied with right hand nut.



**EYE & STA-LOK**

METRIC WIRE

Reference ST36-M

Cat Ref	Wire mm	Metric Thread	Fully Open	Fully Closed	Eye Width	Hole Dia
ST36-03-M6	3	M6	188	127	4.0	6.5
ST36-04-M6	4	M6	192	127	4.0	6.5
ST36-04-M8	4	M8	210	145	5.0	8.6
ST36-05-M8	5	M8	207	149	5.0	8.6
ST36-05-M10	5	M10	254	174	6.0	11.0
ST36-06-M10	6	M10	257	177	6.0	11.0

Available with Metric threads only.



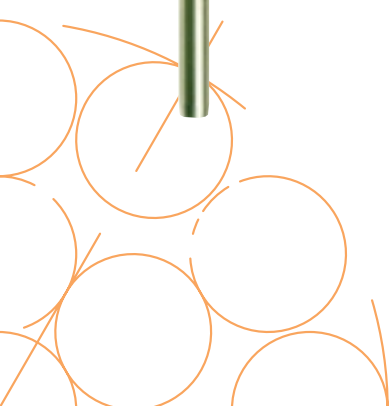
**EYE & SWAGE**

METRIC WIRE

Reference ST38-M

Cat Ref	Wire mm	Metric Thread	Fully Open	Fully Closed	Eye Width	Hole Dia
ST38-02-M5	2	M5	174	118	3.0	5.8
ST38-03-M6	3	M6	195	127	4.0	6.5
ST38-04-M6	4	M6	195	127	4.0	6.5
ST38-04-M8	4	M8	227	155	5.0	8.6
ST38-05-M8	5	M8	227	155	5.0	8.6
ST38-05-M10	5	M10	272	182	6.0	11.0
ST38-06-M10	6	M10	276	186	6.0	11.0

Available with Metric threads only.





**EYE & EYE**

METRIC WIRE

Reference ST42-M

Cat Ref	Metric Thread	Fully Open	Fully Closed	Hole Dia
ST42-M5	M5	186	130	5.8
ST42-M6	M6	195	125	6.5
ST42-M8	M8	230	155	8.6
ST42-M10	M10	270	185	11.0

Available with Metric threads only.

**EYE & TOGGLE**

METRIC WIRE

Reference ST34-M

Cat Ref	Metric Thread	Fully Open	Fully Closed	Hole Dia
ST34-M6	M6	210	142	6.5
ST34-M8	M8	243	173	8.6
ST34-M10	M10	292	202	11.0

Available with Metric threads only.



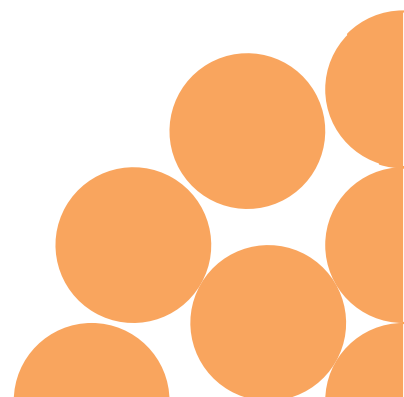
**EYE & WELDED FORK**

METRIC WIRE

Reference ST32-M

Cat Ref	Metric Thread	Fully Open	Fully Closed	Fork Width	Pin Dia
ST32-M5	M5	183	125	7.0	4.9
ST32-M6	M6	200	132	8.0	5.9
ST32-M8	M8	237	163	11.0	7.9
ST32-M10	M10	280	195	12.0	8.9

Available with Metric threads only.



**TOGGLE AND BLANK**

**METRIC WIRE**

Reference

Closed Body Ref	Open Body Ref	Thread	Toggle Width	Pin Dia	Min Break Load KGF
S-38SB	S20-38	3/8	9.9	9.5	3255
SC20-M10	S20-M10	M10	9.9	9.5	3199
S-716SB	S20-716	7/16	11.5	11.1	4388
S-12SB	S20-12	1/2	13.1	12.7	5970
SC20-M12	S20-M12	M12	13.1	12.7	4668
S-58SB	S20-58	5/8	16.3	16.0	9613
SC20-M16	S20-M16	M16	16.3	16.0	8822
S-34SB	S20-34	3/4	19.1	18.5	14061
SC20-M20	S20-M20	M20	19.1	18.5	13779
S-78SB	S20-78	7/8	22.2	21.5	19225
SC20-M22	S20-M22	M22	22.2	21.5	17229



CLOSED BODY SUPAJUST TURNBUCKLE  
Supplied with right hand nut

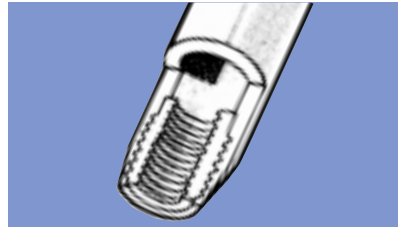
Sta-Lok have developed an exciting range of high quality Supajust Turnbuckles available in Open Body and Closed Body style.

The body of the Turnbuckle is machined from solid stainless steel grade 316 with threaded bronze inserts permanently sealed in each end. The result ensures superb adjustment without the risk of seizing or galling.

Supajust Turnbuckles incorporate ingenious design features which give it distinct advantages over other turnbuckles on the market.



OPEN BODY SUPAJUST TURNBUCKLE



**Threaded Bronze Inserts**

Anti-seizing threaded bronze inserts permanently locked in each end ensure superb adjustment without seizing or galling.

When using Dyform/Compacted strand wire rope, it is strongly recommended to use larger diameter thread options on Turnbuckle threads.



**TOGGLE AND SWAGE**

**METRIC WIRE**

Reference

Closed Body Ref	Open Body ref	Wire mm	Thread	Fully Open	Fully Closed	Toggle Width	Pin Dia	Min Break Load KGF
S-38ST55	S24-05	5	3/8	285	210	9.9	9.5	3255
SC24-05-M10	S24-05-M10	5	M10	285	210	9.9	9.5	3199
S-38ST56	S24-386	6	3/8	295	220	9.9	9.5	3255
SC24-06-M10	S24-06-M10	6	M10	295	220	9.9	9.5	3199
S-716ST56	S24-06	6	7/16	312	232	11.5	11.1	4388
SC24-06-M12	S24-06-M12	6	M12	312	232	11.5	11.1	4668
S-716ST57	S24-7167	7	7/16	312	232	11.5	11.1	4388
S-12ST57	S24-07	7	1/2	372	255	13.1	12.7	5970
SC24-07-M12	S24-07-M12	7	M12	372	255	13.1	12.7	4668
S-12ST58	S24-08	8	1/2	382	265	13.1	12.7	5970
SC24-08-M12	S24-08-M12	8	M12	382	265	13.1	12.7	4668
S-58ST58	S24-588	8	5/8	433	306	16.3	16.0	9613
SC24-08-M16	S24-08-M16	8	M16	433	306	16.3	16.0	8822
S-58ST510	S24-10	10	5/8	433	306	16.3	16.0	9613
SC24-10-M16	S24-10-M16	10	M16	433	306	16.3	16.0	8822
SC24-10-M20	S24-10-M20	10	M20	495	368	19.1	18.5	13779
S-34ST512	S24-12	12	3/4	495	368	19.1	18.5	14061
SC24-12-M20	S24-12-M20	12	M20	495	368	19.1	18.5	13779
SC24-12-M22	S24-12-M22	12	M22	623	445	22.2	21.5	17229
S-78ST514	S24-14	14	7/8	623	445	22.2	21.5	19225
SC24-14-M22	S24-14-M22	14	M22	623	445	22.2	21.5	17229

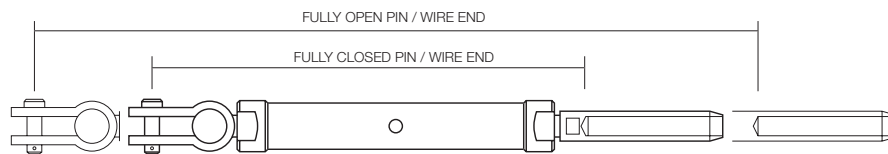


CLOSED BODY SUPAJUST TURNBUCKLE

The Supajust turnbuckle is currently available in two styles.

Closed body Supajust are available with UNF and Metric threads. Positive locking is achieved speedily and effectively with locking nuts.

Open body Supajust are available with UNF and Metric threads.



OPEN BODY SUPAJUST TURNBUCKLE

**TOGGLE & STA-LOK**

METRIC WIRE

Reference

Closed Body Ref	Open Body ref	Wire mm	Thread	Fully Open	Fully Closed	Toggle Width	Pin Dia	Min Break Load KGF
S-38STM5	S22-05	5	3/8	277	205	9.9	9.5	3255
SC22-05-M10	S22-05-M10	5	M10	277	205	9.9	9.5	3199
S-38STM6	S22-386	6	3/8	279	207	9.9	9.5	3255
SC22-06-M10	S22-06-M10	6	M10	279	207	9.9	9.5	3199
S-716STM6	S22-06	6	7/16	310	230	11.5	11.1	4388
SC22-06-M12	S22-06-M12	6	M12	369	252	13.1	12.7	4668
S-716STM7	S22-7167	7	7/16	310	230	11.5	11.1	4388
S-12STM7	S22-07	7	1/2	371	254	13.1	12.7	5970
SC22-07-M12	S22-07-M12	7	M12	371	254	13.1	12.7	4668
S-12STM8	S22-08	8	1/2	377	260	13.1	12.7	5970
SC22-08-M12	S22-08-M12	8	M12	377	260	13.1	12.7	4668
S-58STM8	S22-588	8	5/8	424	297	16.3	16.0	9613
SC22-08-M16	S22-08-M16	8	M16	424	297	16.3	16.0	8822
S-58STM10	S22-10	10	5/8	424	297	16.3	16.0	9613
SC22-10-M16	S22-10-M16	10	M16	424	297	16.3	16.0	8822
SC22-10M20	S22-10-M20	10	M20	522	370	19.1	18.5	13779
S-34STM12	S22-12	12	3/4	522	370	19.1	18.5	14061
SC22-12-M20	S22-12-M20	12	M20	522	370	19.1	18.5	13779
SC22-12-M22	S22-12-M22	12	M22	575	370	19.1	18.5	13779
S-78STM14	S22-14	14	7/8	575	397	22.2	21.5	19225
SC22-14-M22	S22-14-M22	14	M22	575	397	22.2	21.5	13779

The Supajust turnbuckle is currently available in two styles.

Closed body Supajust are available with UNF and Metric threads. Positive locking is achieved speedily and effectively with locking nuts.

Open body Supajust are available with UNF and Metric threads.

Supplied with split pins.



CLOSED BODY SUPAJUST TURNBUCKLE



OPEN BODY SUPAJUST TURNBUCKLE



# SUPAJUST TURNBUCKLES



CLOSED BODY SUPAJUST TURNBUCKLE



OPEN BODY SUPAJUST TURNBUCKLE



CLOSED BODY SUPAJUST TURNBUCKLE



OPEN BODY SUPAJUST TURNBUCKLE

## TOGGLE & TOGGLE

## METRIC WIRE

Reference

Closed Body Ref	Open Body Ref	Thread	Toggle Width	Pin Dia	Min Break Load KGF
S-38TT	S41-38	3/8	9.9	9.5	3255
SC41-M10	S41-M10	M10	9.9	9.5	3199
S-716TT	S41-716	7/16	11.5	11.1	4388
S-12TT	S41-12	1/2	13.1	12.7	5970
SC41-M12	S41-M12	M12	13.1	12.7	4668
S-58TT	S41-58	5/8	16.3	16.0	9613
SC41-M16	S41-M16	M16	16.3	16.0	8822
S-34TT	S41-34	3/4	19.1	18.5	14061
SC41-M20	S41-M20	M20	19.1	18.5	13779
S-78TT	S41-78	7/8	22.2	21.5	19225
SC41-M22	S41-M22	M22	22.2	21.5	17229

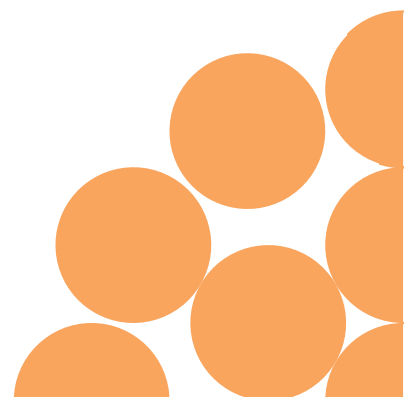


## TOGGLE & FORK

## METRIC WIRE

Reference

Closed Body Ref	Open Body Ref	Thread	Fork Width	Pin Dia	Min Break Load KGF
S-38SF	S21-38	3/8	9.5	9.3	3255
SC21-M10	S21-M10	M10	9.5	9.3	3199
S-716SF	S21-716	7/16	11.1	10.9	4388
S-12SF	S21-12	1/2	12.7	12.6	5970
SC21-M12	S21-M12	M12	12.7	12.6	4668
S-58SF	S21-58	5/8	15.9	15.6	9613
SC21-M16	S21-M16	M16	15.9	15.6	8822
S-34SF	S21-34	3/4	19.1	18.5	14061
SC21-M20	S21-M20	M20	19.1	18.5	13779
S-78SF	S21-78	7/8	22.2	21.5	19225
SC21-M22	S21-M22	M22	22.2	21.5	17229

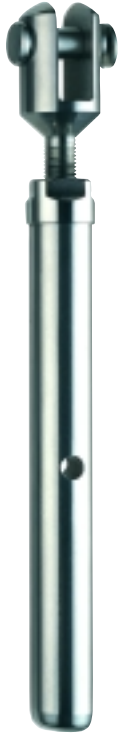


## FORK & BLANK

## METRIC WIRE

Reference

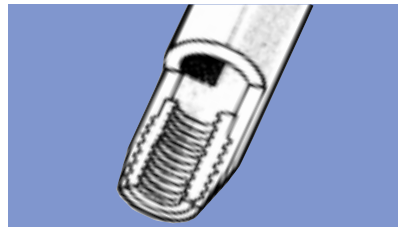
Closed Body Ref	Open Body Ref	Thread	Fork Width	Pin Dia	Min Break Load KGF
S-38FB	S30-38	3/8	9.5	9.3	3255
SC30-M10	S30-M10	M10	9.5	9.3	3119
S-716FB	S30-716	7/16	11.1	10.9	4388
S-12FB	S30-12	1/2	12.7	12.6	5970
SC30-M12	S30-M12	M12	12.7	12.6	4668
S-58FB	S30-58	5/8	15.9	15.6	9613
SC30-M16	S30-M16	M16	15.9	15.6	8822
S-34FB	S30-34	3/4	19.1	18.5	14061
SC30-M20	S30-M20	M20	19.1	18.5	13779
S-78FB	S30-78	7/8	22.2	21.5	19225
SC30-M22	S30-M22	M22	22.2	21.5	17229
S-100FB	S30-100	1	25.4	25.0	24994
SC30-M24	S30-M24	M24	25.4	25.0	19845
S-118FB	S30-118	1 1/8	28.6	28.2	32439
SC30-M27	S30-M27	M27	28.6	28.2	26131
S-114FB	S30-114	1 1/4	31.8	31.5	40852
SC30-M30	S30-M30	M30	31.8	31.5	31757
S-138FB	S30-138	1 3/8	34.9	34.6	50235
SC30-M36	S30-M36	M36	34.9	34.6	46472



CLOSED BODY SUPAJUST TURNBUCKLE  
Supplied with right hand nut

Sta-Lok offer an extensive range of stainless steel turnbuckles to suit every application.

Manufactured from high quality certified materials the Sta-Lok range is unparalleled.



### Threaded Bronze Inserts

Anti-seizing threaded bronze inserts permanently locked in each end ensure superb adjustment without seizing or galling.



OPEN BODY SUPAJUST TURNBUCKLE



CLOSED BODY SUPAJUST TURNBUCKLE



OPEN BODY SUPAJUST TURNBUCKLE

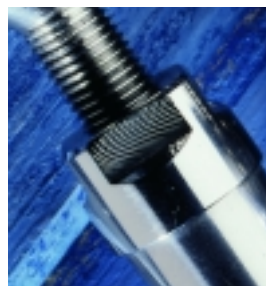
## FORK & SWAGE

METRIC WIRE

Reference

Closed Body Ref	Open Body Ref	Wire mm	Thread	Fully Open	Fully Closed	Fork Width	Pin Dia	Min Break Load KGF
S-38FTS5	S28-05	5	3/8	270	196	9.5	9.3	3255
SC28-05-M10	S28-05-M10	5	M10	270	196	9.5	9.3	3199
S-38FTS6	S28-386	6	3/8	280	206	9.5	9.3	3255
SC28-06-M10	S28-06-M10	6	M10	280	206	9.5	9.3	3199
S-716FTS6	S28-06	6	7/16	310	230	11.1	10.9	4388
SC28-06-M12	S28-06-M12	6	M12	365	248	12.7	12.6	4668
S-716FTS7	S28-7167	7	7/16	310	230	11.1	10.9	4388
S-12FTS7	S28-07	7	1/2	365	248	12.7	12.6	5970
SC28-07-M12	S28-07-M12	7	M12	365	248	12.7	12.6	4668
S-12FTS8	S28-08	8	1/2	377	260	12.7	12.6	5970
SC28-08-M12	S28-08-M12	8	M12	377	260	12.7	12.6	4668
S-58FTS8	S28-588	8	5/8	408	281	15.9	15.6	9613
SC28-08-M16	S28-08-M16	8	M16	408	281	15.9	15.6	8822
S-58FTS10	S28-10	10	5/8	411	284	15.9	15.6	9613
SC28-10-M16	S28-10-M16	10	M16	411	284	15.9	15.6	8822
SC28-10-M20	S28-10-M20	10	M20	504	352	19.1	18.5	13779
S-34FTS12	S28-12	12	3/4	504	352	19.1	18.5	14061
SC28-12-M20	S28-12-M20	12	M20	504	352	19.1	18.5	13779
SC28-12-M22	S28-12-M22	12	M22	592	352	22.2	21.5	17229
S-78FTS14	S28-14	14	7/8	592	414	22.2	21.5	19225
SC28-14-M22	S28-14-M22	14	M22	592	414	22.2	21.5	17229
S-100FTS16	S28-16	16	1	663	460	25.4	25.0	24995
SC28-16-M24	S28-16-M24	16	M24	663	460	25.4	25.0	19845
SC28-16-M27	S28-16-M27	16	M27	791	550	28.6	28.2	26131
S-118FTS19	S28-19	19	1 1/8	791	550	28.6	28.2	32439
SC28-19-M27	S28-19-M27	19	M27	791	550	28.6	28.2	26131
SC28-19-M30	S28-19-M30	19	M30	956	664	31.8	31.5	31757
S-114FTS22	S28-22	22	1 1/4	956	664	31.8	31.5	40852
SC28-22-M30	S28-22-M30	22	M30	956	664	31.8	31.5	31757
S-138FTS26	S28-26	26	1 3/8	970	678	34.9	34.6	50235
SC28-26-M36	S28-26-M36	26	M36	970	678	34.9	34.6	46472

When using Dyform/Compacted strand wire rope, it is strongly recommended to use larger diameter thread options on Turnbuckle threads.



**FORK & STA-LOK**

Reference

Closed Body Ref	Open Body Ref	Wire mm	Thread	Fully Open	Fully Closed	Fork Width	Pin Dia	Min Break Load KGF
S-38FTM5	S26-05	5	3/8	265	192	9.5	9.3	3255
SC26-05-M10	S26-05-M10	5	M10	265	192	9.5	9.3	3199
S-38FTM6	S26-386	6	3/8	266	193	9.5	9.3	3255
SC26-06-M10	S26-06-M10	6	M10	266	193	9.5	9.3	3199
S-716FTM6	S26-06	6	7/16	299	219	11.1	10.9	4388
SC26-06-M12	S26-06-M12	6	M12	360	243	12.7	12.6	4668
S-716FTM7	S26-7167	7	7/16	299	219	11.1	10.9	4388
S-12FTM7	S26-07	7	1/2	365	248	12.7	12.6	5970
SC26-07-M12	S26-07-M12	7	M12	365	248	12.7	12.6	4668
S-12FTM8	S26-08	8	1/2	365	248	12.7	12.6	5970
SC26-08-M12	S26-08-M12	8	M12	365	248	12.7	12.6	4668
S-58FTM8	S26-588	8	5/8	402	275	15.9	15.6	9613
SC26-08-M16	S26-08-M16	8	M16	402	275	15.9	15.6	8822
S-58FTM10	S26-10	10	5/8	402	275	15.9	15.6	9613
SC26-10-M16	S26-10-M16	10	M16	402	272	15.9	15.6	8822
SC26-10-M20	S26-10-M20	10	M20	502	350	19.1	18.5	13779
S-34FTM12	S26-12	12	3/4	502	350	19.1	18.5	14061
SC26-12-M20	S26-12-M20	12	M20	502	350	19.1	18.5	13779
SC26-12-M22	S26-12-M22	12	M22	586	408	22.2	21.5	17229
S-78FTM14	S26-14	14	7/8	586	408	22.2	21.5	19225
SC26-14-M22	S26-14-M22	14	M22	586	408	22.2	21.5	17229
SC26-14-M24	S26-14-M24	14	M24	658	455	25.4	25.0	19845
S-100FTM16	S26-16	16	1	658	455	25.4	25.0	24995
SC26-16-M24	S26-16-M24	16	M24	658	455	25.4	25.0	19845
SC26-16-M27	S26-16-M27	16	M27	789	548	28.6	28.2	26131
S-118FTM19	S26-19	19	1 1/8	789	548	28.6	28.2	32439
SC26-19-M27	S26-19-M27	19	M27	789	548	28.6	28.2	26131
SC26-19-M30	S26-19-M30	19	M30	956	664	31.8	31.5	31757
S-114FTM22	S26-22	22	1 1/4	956	664	31.8	31.5	40852
SC26-22-M30	S26-22-M30	22	M30	956	664	31.8	31.5	31757
S-138FTM26	S26-26	26	1 3/8	970	678	34.9	34.6	50235
SC26-26-M36	S26-26-M36	26	M36	970	678	34.9	34.6	46472

CLOSED BODY SUPAJUST TURNBUCKLE



OPEN BODY SUPAJUST TURNBUCKLE



**FORK & FORK**

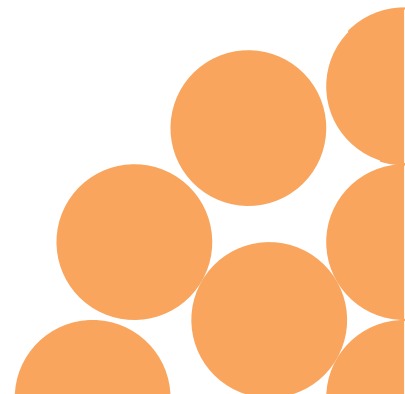
**METRIC WIRE**

Reference

Closed Body Ref	Open Body Ref	Thread	Fully Open	Fully Closed	Fork Width	Pin Dia	Min Break Load KGF
S-38FF	S31-38	3/8	281	206	9.5	9.3	3255
SC31-M10	S31-M10	M10	281	206	9.5	9.3	3199
S-716FF	S31-716	7/16	321	241	11.1	10.9	4388
S-12FF	S31-12	1/2	365	273	12.7	12.6	5970
SC31-M12	S31-M12	M12	365	273	12.7	12.6	4668
S-58FF	S31-58	5/8	432	305	15.9	15.6	9613
SC31-M16	S31-M16	M16	432	305	15.9	15.6	8822
S-34FF	S31-34	3/4	532	380	19.1	18.5	14061
SC31-M20	S31-M20	M20	532	380	19.1	18.5	13779
S-78FF	S31-78	7/8	618	440	22.2	21.5	19225
SC31-M22	S31-M22	M22	618	440	22.2	21.5	17229
S-100FF	S31-100	1	693	490	25.4	25.0	24994
SC31-M24	S31-M24	M24	693	490	25.4	25.0	19845
S-118FF	S31-118	1 1/8	851	610	28.6	28.2	32439
SC31-M27	S31-M27	M27	851	610	28.6	28.2	26131
S-114FF	S31-114	1 1/4	1016	724	31.8	31.5	40852
SC31-M30	S31-M30	M30	1016	724	31.8	31.5	31757
S-138FF	S31-138	1 3/8	1310	1018	34.9	34.6	50235
SC31-M36	S31-M36	M36	1310	1018	34.9	34.6	46472

CLOSED BODY SUPAJUST TURNBUCKLE

OPEN BODY SUPAJUST TURNBUCKLE

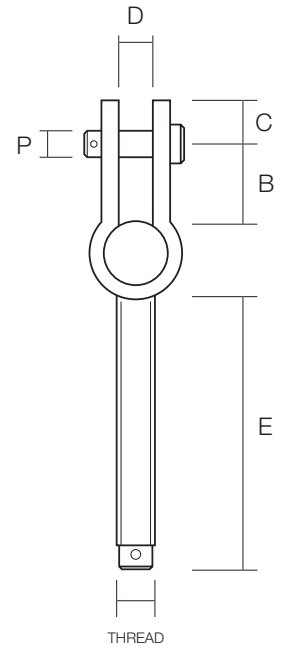


## STRAP TOGGLE END

Reference B18/B15



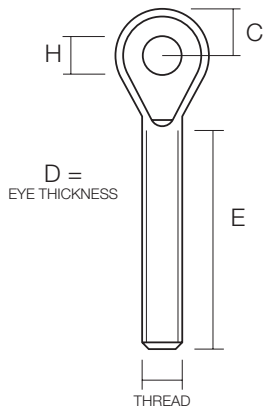
Left Hand Ref	Right Hand Ref	Thread	B	C	D	P	E
B18-14	B15-14	1/4	15	9	6.4	6.4	57
B18-M6	B15-M6	M6	15	9	6.4	6.4	57
B18-516	B15-516	5/16	19	10	8.4	7.9	60
B18-M8	B15-M8	M8	19	10	8.4	7.9	60
B18-38	B15-38	3/8	21	11	9.9	9.5	70
B18-M10	B15-M10	M10	21	11	9.9	9.5	70
B18-716	B15-716	7/16	25	15	11.5	11.1	75
B18-12	B15-12	1/2	28	16	13.1	12.7	81
B18-M12	B15-M12	M12	28	16	13.1	12.7	81
B18-58	B15-58	5/8	33	20	16.3	16.0	89
B18-M16	B15-M16	M16	33	20	16.3	16.0	89
B18-34	B15-34	3/4	34	25	19.1	18.5	125
B18-M20	B15-M20	M20	34	25	19.1	18.5	125
B18-78	B15-78	7/8	40	32	22.2	21.5	148
B18-M22	B15-M22	M22	40	32	22.2	21.5	148



Supplied with pin and split pin.

## EYE END

Reference TE-M L=Left Hand TE-M R=Right Hand



Cat Ref	Thread	C	D	E	H
TE-M5 L/R	M5	6.5	3.0	40	5.8
TE-M6 L/R	M6	7.5	4.0	47	6.5
TE-M8 L/R	M8	9.5	5.0	57	8.6
TE-M10 L/R	M10	13.0	6.0	63	11.0

Supplied complete with nut.

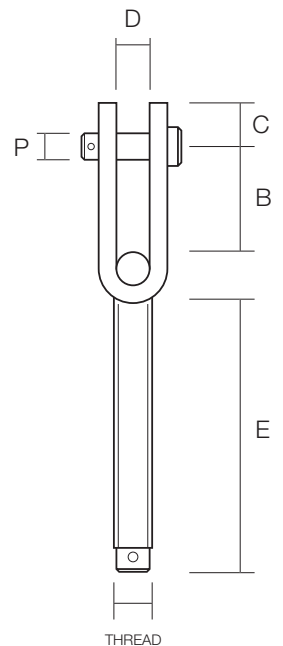


## U STRAP TOGGLE END

Reference U18/U15



Left Hand Ref	Right Hand Ref	UNF Thread	B	C	D	P	E
U18-14	U15-14	1/4	20	9	7	6.4	60
U18-516	U15-516	5/16	25	10	10	7.9	66
U18-38	U15-38	3/8	28	12	12	9.5	70
U18-716	U15-716	7/16	32	15	13	11.1	77
U18-12	U15-12	1/2	34	17	14	12.7	81
U18-58	U15-58	5/8	43	20	19	16.0	99

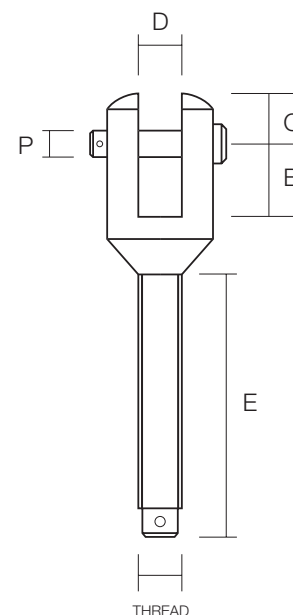


## FORK END

Reference B16/B17

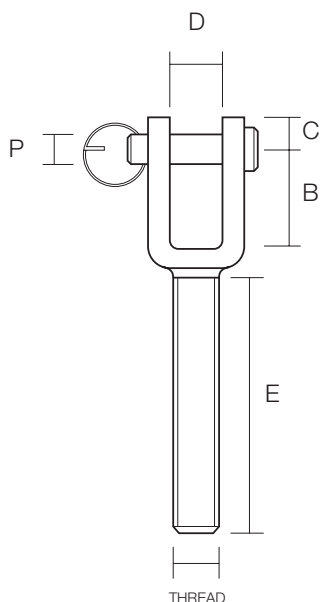


LEFT Hand Ref	Right Hand Ref	Thread	B	C	D	P	E
B16-14	B17-14	1/4	10.0	8.5	6.4	6.2	54
B16-M6	B17-M6	M6	10.0	8.5	6.4	6.2	54
B16-516	B17-516	5/16	14.7	10.3	7.9	7.7	59
B16-M8	B17-M8	M8	14.7	10.3	7.9	7.7	59
B16-38	B17-38	3/8	17.5	11.9	9.5	9.3	67
B16-M10	B17-M10	M10	17.5	11.9	9.5	9.3	67
B16-716	B17-716	7/16	22.2	15.7	11.1	10.9	76
B16-12	B17-12	1/2	27.4	19.0	12.7	12.6	83
B16-M12	B17-M12	M12	27.4	19.0	12.7	12.6	83
B16-58	B17-58	5/8	29.4	22.6	15.9	15.6	95
B16-M16	B17-M16	M16	29.4	22.6	15.9	15.6	95
B16-34	B17-34	3/4	33.3	25.6	19.1	18.5	124
B16-M20	B17-M20	M20	33.3	25.6	19.1	18.5	124
B16-78	B17-78	7/8	38.1	31.7	22.2	21.5	147
B16-M22	B17-M22	M22	38.1	31.7	22.2	21.5	147
B16-100	B17-100	1	40.0	35.3	25.4	25.0	165
B16-M24	B17-M24	M24	40.0	35.3	25.4	25.0	165
B16-118	B17-118	1 1/8	50.0	41.3	28.6	28.2	190
B16-M27	B17-M27	M27	50.0	41.3	28.6	28.2	190
B16-114	B17-114	1 1/4	60.4	44.4	31.8	31.5	227
B16-M30	B17-M30	M30	60.4	44.4	31.8	31.5	227
B16-138	B17-138	1 3/8	69.8	52.4	34.9	34.6	232
B16-M36	B17-M36	M36	69.8	52.4	34.9	34.6	232



Machined from solid stainless steel.

Supplied with pin and split pin.



## WELDED FORK END

Reference WTF-M L=Left Hand WTF-M R=Right hand

Cat Ref	Thread	B	C	D	E	P
WTF-M5 L/R	M5	11.5	6.0	7.0	40	4.9
WTF-M6 L/R	M6	12.0	6.5	8.0	50	5.9
WTF-M8 L/R	M8	15.0	8.5	11.0	57	7.9
WTF-M10 L/R	M10	17.5	10.0	12.0	68	8.9

Supplied complete with nut, pin and split pin.



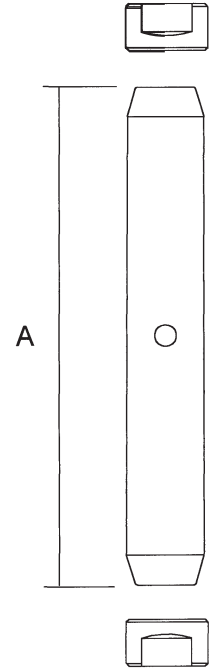
## SUPAJUST TURNBUCKLE BODY

Reference SC19



CLOSED BODY SUPAJUST TURNBUCKLE  
Supplied with nuts

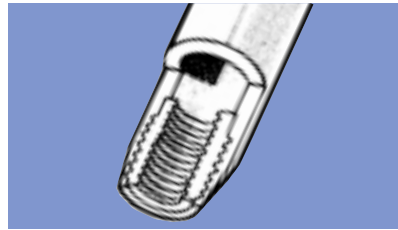
Closed Body Ref	Open Body Ref	Thread	A
SC19-38	S19-38	3/8	148
SC19-M10	S19-M10	M10	148
SC19-716	S19-716	7/16	161
SC19-12	S19-12	1/2	182
SC19-M12	S19-M12	M12	182
SC19-58	S19-58	5/8	210
SC19-M16	S19-M16	M16	210
SC19-34	S19-34	3/4	248
SC19-M20	S19-M20	M20	248
SC19-78	S19-78	7/8	280
SC19-M22	S19-M22	M22	280
SC19-100	S19-100	1	315
SC19-M24	S19-M24	M24	315
SC19-118	S19-118	1 1/8	365
SC19-M27	S19-M27	M27	365
SC19-114	S19-114	1 1/4	441
SC19-M30	S19-M30	M30	441
SC19-138	S19-138	1 3/8	441
SC19-M36	S19-M36	M36	441



Sta-Lok have developed an exciting range of high quality Supajust Turnbuckles available in Open Body and Closed Body style.

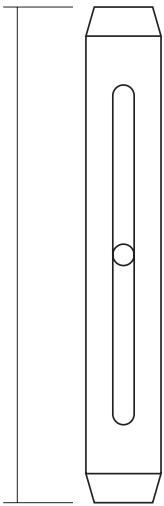
The body of the Turnbuckle is machined from high specification polished solid stainless steel grade 316 with threaded bronze inserts permanently sealed in each end. The result ensures superb adjustment without the risk of seizing or galling.

Supajust Turnbuckles incorporate ingenious design features which give it distinct advantages over other turnbuckles on the market.



### Threaded Bronze Inserts

Anti-seizing threaded bronze inserts permanently locked in each end ensure superb adjustment without seizing or galling.



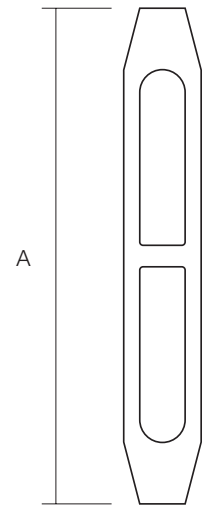
OPEN BODY SUPAJUST TURNBUCKLE

## FORGED BRONZE BODY

Reference B19



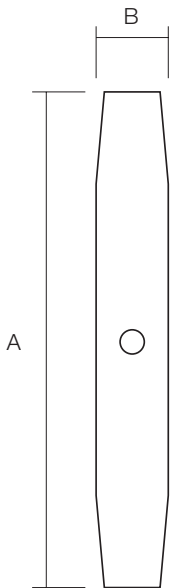
Cat Ref	Thread	A
B19-14	1/4	114
B19-M6	M6	114
B19-516	5/16	123
B19-M8	M8	123
B19-38	3/8	133
B19-M10	M10	133
B19-716	7/16	152
B19-12	1/2	163
B19-M12	M12	163
B19-58	5/8	200
B19-M16	M16	200
B19-34	3/4	255
B19-M20	M20	255



Forged Bronze alloy, high specification chromium plating.

## STAINLESS STEEL BODY

Reference TB



Cat Ref	Thread	A	B
TB-M5	M5	80	8.0
TB-14	1/4	90	12.5
TB-M6	M6	90	12.5
TB-516	5/16	105	13.5
TB-M8	M8	105	13.5
TB-38	3/8	125	17.5
TB-M10	M10	125	17.5



Stainless steel grade 316.

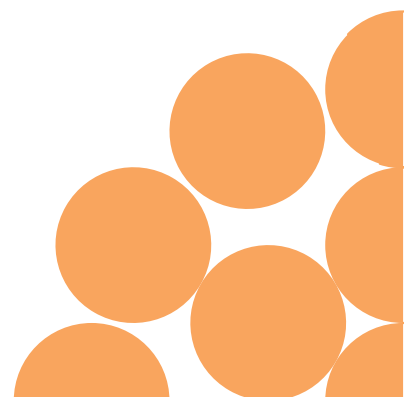
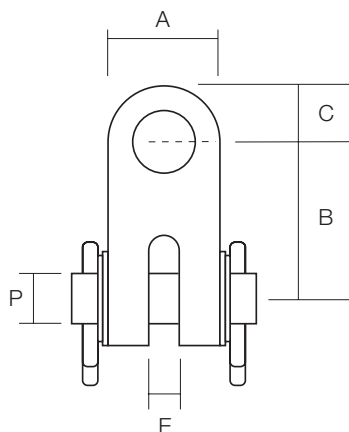
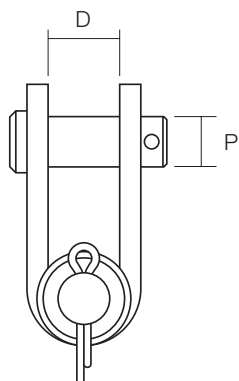
Locking nuts not included.

## DOUBLE JAW TOGGLE

Reference DJT



Cat Ref	A	B	C	D	P	E
DJT-14	16	20	9	7	6.4	6.4
DJT-516	19	25	10	10	7.9	8.3
DJT-38	22	28	12	12	9.5	9.9
DJT-716	29	32	15	13	11.1	11.5
DJT-12	32	34	17	14	12.7	13.0
DJT-58	38	43	20	19	16.0	16.3



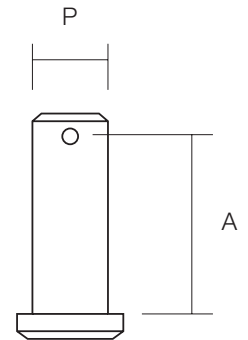
## TURNBUCKLE FORK PIN

METRIC WIRE

Reference 047



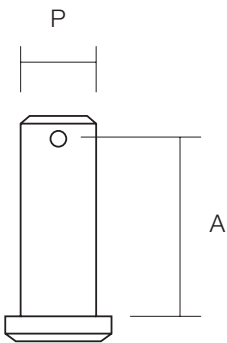
Cat Ref	Turnbuckle		A	P	Package Quantity
	unf	mm			
047-03	1/4	M6	14.5	6.2	5
047-04	5/16	M8	19.0	7.7	5
047-05	3/8	M10	23.8	9.3	5
047-06	7/16		27.0	10.9	5
047-08	1/2	M12	34.1	12.6	2
047-10	5/8	M16	40.5	15.6	2
047-12	3/4	M20	47.6	18.5	1
047-14	7/8	M22	54.0	21.5	1
047-16	1"	M24	60.3	25.0	1
047-19	1 1/8	M27	69.8	28.2	1
047-22	1 1/4	M30	74.6	31.5	1
047-26	1 3/8	M36	87.3	34.6	1



## STRAP TOGGLE PIN

METRIC WIRE

Reference 057



Cat Ref	Turnbuckle		A	P	Package Quantity
	unf	mm			
057-03	1/4	M6	12.7	6.4	5
057-04	5/16	M8	15.5	7.9	5
057-05	3/8	M10	17.5	9.5	5
057-06	7/16		20.2	11.1	5
057-08	1/2	M12	23.8	12.7	2
057-10	5/8	M16	31.0	16.0	2
057-12	3/4	M20	38.1	18.5	1
057-14	7/8	M22	42.0	21.5	1



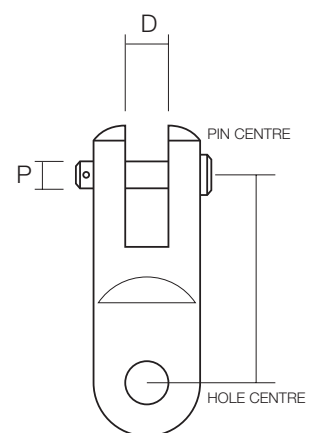
## BAR TOGGLE FORK & EYE

METRIC WIRE

Reference BT



Cat Ref	Pin Centre	Fork Width	Pin Dia
S-BT-516	38	7.9	7.9
S-BT-38	44	9.5	9.4
S-BT-716	58	11.1	10.9
S-BT-12	68	12.7	12.6
S-BT-58	70	15.9	15.6
S-BT-34	82	19.1	18.5
S-BT-78	103	22.2	21.5
S-BT-100	111	25.4	25.0
S-BT-118	130	28.5	28.2
S-BT-114	154	32.0	31.5
S-BT-138	170	35.0	34.6



Machined from solid stainless steel.

The Sta-Lok Bar Toggle has been especially designed to mate with turnbuckle forks to provide full articulation.

It is recommended that a bar toggle should be used with all turnbuckle fork ends.



**SPLIT RINGS**

Reference C775

METRIC WIRE

Cat Ref	Dia	Package Quantity
C775-00	11	10
C775-01	16	10
C775-02	24	10

**SPLIT PINS**

Reference C779

METRIC WIRE

Cat Ref	Dia	Length	Package Quantity
C779-00	1.5	12	10
C779-01	2.3	12	10
C779-02	2.3	16	10
C779-03	2.3	19	10
C779-04	3	19	10
C779-05	3	24	10
C779-06	5	40	10
C779-07	5	52	10



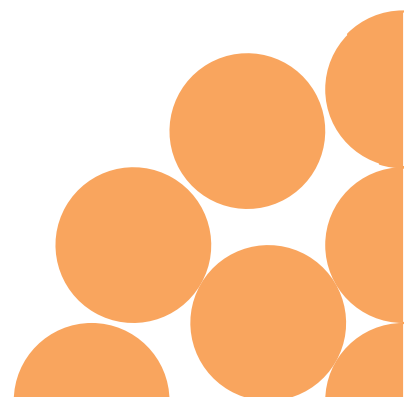
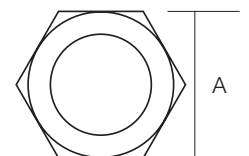
**HEXAGONAL NUT**

Reference HN-M L=Left Hand Thread HN-M R=Right Hand Thread

METRIC WIRE



Cat Ref	Metric Thread	A	B
HN-M6 L/R	M6	10	5.0
HN-M8 L/R	M8	10	5.0
HN-M10 L/R	M10	16	8.4
HN-M12 L/R	M12	18	10.8
HN-M14 L/R	M14	24	14.8
HN-M16 L/R	M16	24	14.8
HN-M20 L/R	M20	30	18.0
HN-M22 L/R	M22	36	21.5
HN-M24 L/R	M24	36	21.5

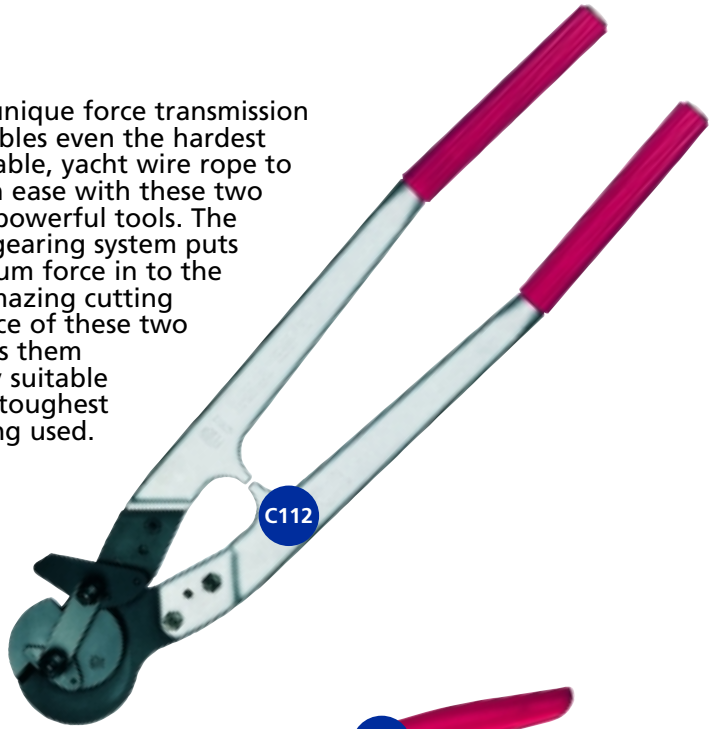


# FELCO WIRE CUTTERS

Felco have taken the utmost care during manufacture of all Felco components. Each cutter is individually bench tested prior to despatch. Felco guarantees the reliability and longevity of their cutters if used according to their recommendations.

Spares for Felco Cutters are available. Please ask for details.

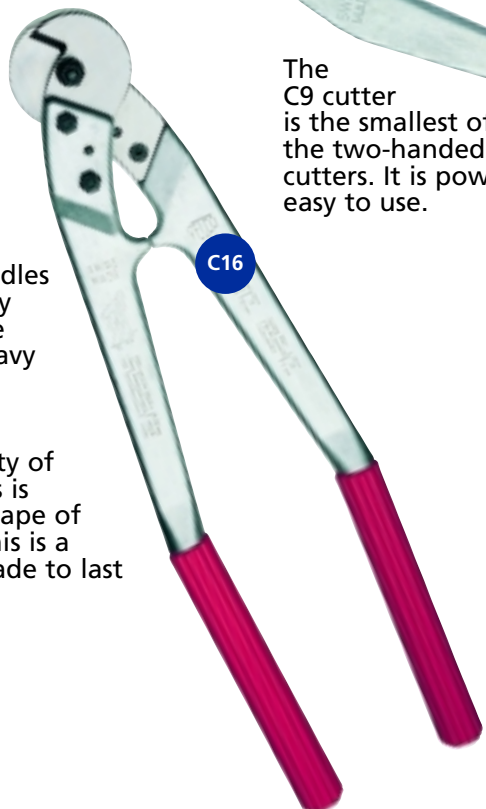
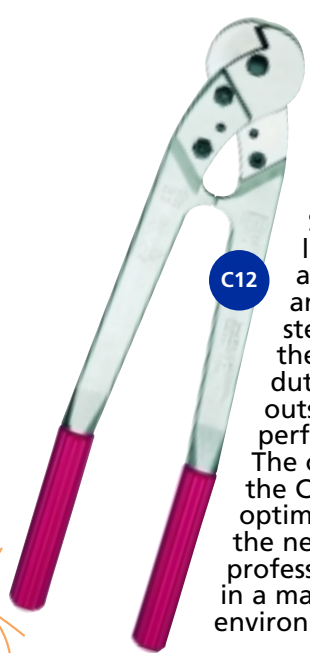
The Felco unique force transmission system enables even the hardest funicular cable, yacht wire rope to be cut with ease with these two extremely powerful tools. The reduction gearing system puts the maximum force in to the cut. The amazing cutting performance of these two tools makes them particularly suitable where the toughest wire is being used.



The C7 cutter is an outstandingly powerful tool. The long lasting quality make it suitable for both manufacturing and hobby use.

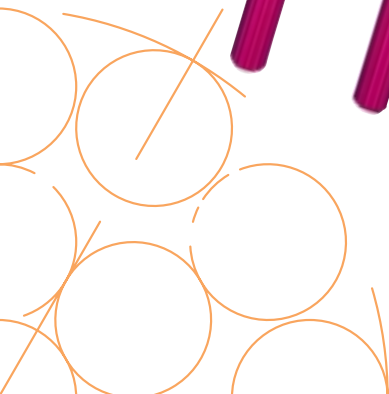


The C9 cutter is the smallest of the two-handed Felco cutters. It is powerful, light and easy to use.



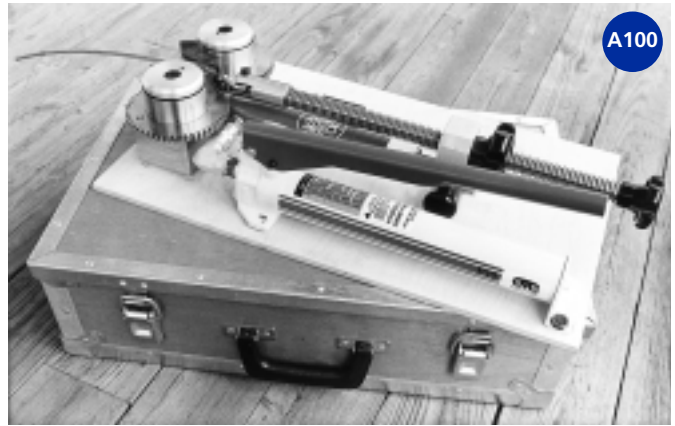
Strong, lightweight aluminium handles and special alloy steel blades give these robust, heavy duty cutters outstanding performance. The cutting capacity of the C12/C16 cutters is optimised by the shape of the new handles. This is a professional tool, made to last in a manufacturing environment.

- C108 Cutting Capacity 8mm wire rope
- C112 Cutting Capacity 12mm wire rope
- C7 Cutting Capacity 5mm wire rope
- C9 Cutting Capacity 7mm wire rope
- C16 Cutting Capacity 14mm wire rope
- C12 Cutting Capacity 8mm wire rope



**WIRE TEKNIK  
A100**

Roller swaging machine, swaging range from 1.6 - 5.0mm. Including hand pump, pulling devices and transport box.



**A200**

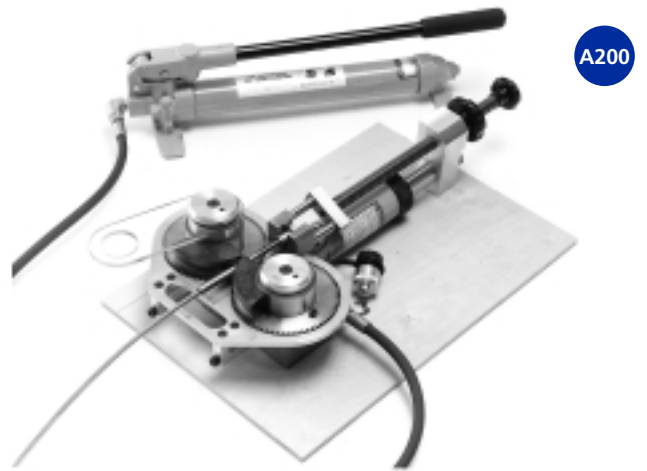
Roller swaging machine, swaging range from 1.6 - 8.0mm. Including hand pump, pulling devices and transport box.

**A250**

Roller swaging machine, swaging range from 2.5 - 12.0mm (1/2"). Including pulling devices and transport box.

**A300**

Roller swaging machine, swaging range from 2.5 - 16mm. Including pulling devices and transport box.



**ELECTRO HYDRAULIC  
POWER UNITS**

Are available with single phase and three phase electric options.



Hand operated pump.



18 tonne Talurit press. Dies for British Standard, DIN Standard and Hexlock available.



# TERMS AND CONDITIONS

## STA-LOK TERMINALS LIMITED STANDARD TERMS AND CONDITIONS OF SALE

### 1. Definitions

In these Terms & Conditions, unless the context otherwise requires:

"The Company" means Sta-Lok Terminals Ltd of The Forge, Mistley Heath, Manningtree, Essex, CO11 2QH.

"The Customer" means the person, firm or company to whom the Company supplies Goods under the Contract.

"The Contract" means the contract entered into between the Company and the Customer in relation to the Goods supplied, and

"The Goods" means the goods which the company is to supply to the Customer under the Contract.

### 2. General

2.1 The Company supplies the Goods on these Terms & Conditions only. Accordingly these Terms and Conditions shall apply to all orders for the Goods which are received from the Customer and (save as shall have been expressly agreed in writing by a director of the Company) shall prevail over any conditions of contract which the Customer may seek to impose. No variation of or addition to these Terms & Conditions and no representations about the Goods will be binding on the Company unless made in writing and signed by a director of the Company.

2.2 Any reference in these Terms & Conditions to any provision of an Act of Parliament or statutory instrument shall be construed as a reference to that provision as amended, reenacted or extended from time to time.

2.3 The headings in these Terms & Conditions are set out for convenience only and shall have no effect on the interpretation of the individual clauses.

### 3. The Scope of the Contract

3.1 The Contract does not become binding upon the Company until the Company has issued a written acceptance of the Customer's order.

3.2 The Company's obligations under the Contract shall be limited to supplying the Goods contemplated by the Customer's order together with any variations thereof and additions thereto, which may subsequently be agreed. The Customer must give the Company reasonable notice of any variations and additions that are required.

### 4. Price

4.1 Subject as hereinafter provided, the price payable by the Customer for the Goods shall reflect the Company's price list from time to time in force in relation to the Customer except where the Company has issued a written quotation to the Customer, in which case the price or prices referred to in that quotation shall prevail.

4.2 The Company does however reserve the right to increase the price payable in order to reflect any agreed variations or additions to the Customer's requirements and any increases in production costs, which may be incurred by the Company between the date of the Customer's order and the date of despatch. In no circumstances shall any increases in the Contract price entitle the Customer to cancel its order or to repudiate the Contract but the Customer shall be entitled to receive notification of any such increases as soon as possible after their occurrence.

4.3 Unless expressly included in any quote given to the Customer, the Company shall be entitled to recover from the Customer as an additional item at cost all transportation, insurance, storage and other associated costs and charges which are incurred by the Company in delivering the Goods in accordance with the Customer's order, including any additional costs and charges which may be incurred by the Company in the event of the Customer for any reason failing or being unable to accept delivery of the Goods when tendered or causing despatch or delivery to be withheld through the non-payment of any sum due to the Company.

4.4 Unless otherwise indicated, all prices listed or quoted are exclusive of any applicable Value Added or other relevant sales taxes, which the Company reserves the right to levy at the prevailing rate on all amounts actually charged to the Customer.

### 5. Payment

5.1 Payment of sums due under the Contract shall be made by the Customer nett within 30 days of invoice, unless the Company has requested alternative terms of payment in which case payment should be made on the terms then requested. The Company shall be entitled to invoice the Customer for each consignment despatched at any time on or after the date of despatch.

5.2 In the event that payment is not made by the due date, the Company shall be entitled to charge the Customer interest on any overdue amounts at the rate of 2% per month (or at such other rate as may be advised by the Company from time to time) for each month or part month during which the said amounts are to remain overdue (both before and after any judgement).

5.3 Payment on or before the due date is of the essence of the Contract. Accordingly the Company shall upon notice to the Customer be entitled to withhold delivery and/or suspend the performance of the Contract generally if at the time of the notice payment of any amount stated on any of the Company's invoices (whether related to the Contract or not) is then overdue. If the Customer fails within 14 days of notice to settle the amount outstanding under the said invoices, then the Company shall be entitled to terminate the Contract without further notice.

5.4 The Customer shall not be entitled to retain, deduct or defer any sums whatsoever due to the Company under the Contract on account of any dispute cross claim or set off which it might have with the Company or with any company in the same group of companies as the Company.

### 6. Delivery and Performance

6.1 The performance of the Contract is subject to availability, and therefore in the event that it is unable to supply any specific Goods or any specific quantities of Goods, the Company reserves the right to provide suitable alternatives or suitable alternative quantities, and to make such reasonable adjustments (upwards or downwards) to the Contract price as are necessary to reflect the change. Such alterations shall not entitle the Customer to repudiate the Contract.

6.2 Unless otherwise indicated, and subject to the provisions of clause 4.3, the Company shall be responsible for arranging delivery of Good to the Customer's premises. Accordingly the Customer undertakes to provide a safe and convenient access for the Company's delivery vehicles (or those of its agents) at each delivery point together with safe facilities for the loading and unloading of the Goods (including any assistance in loading and unloading that may be required). The placing of an order by the Customer shall be deemed to constitute authority for the Company's delivery vehicles (or those of its agents) to enter the Customer's premises where necessary and it shall be the responsibility of Customer to supervise the safe discharge of each load.

6.3 Any time estimates or delivery dates given by the Company shall be by way of guidance only and shall not be of the essence of the Contract. Accordingly any delay in delivery shall not entitle the Customer to repudiate the Contract and the Company shall not be liable to the Customer (either in contract or tort) for any loss or damage whatsoever (including consequential losses, loss of profit and other losses of a similar nature) which may be suffered or sustained by it as a result of any failure by the Company to adhere to any time estimate or delivery date given.

6.4 If for any reason the Company still fails to deliver the Goods within any reasonable time limit specified by the Customer at any time after the Customer has purported to make time of the essence of the Contract, and a Court or any other arbiter subsequently finds the Company to be responsible for any loss or damage suffered by the Customer as a result thereof, the Company's liability therefore (both in contract and tort) shall be strictly limited to the excess (if any) of the cost to the Customer (over and above the Contract price) of obtaining similar goods (in the cheapest available market to replace those not delivered).

6.5 Without prejudice to any of the above the Company shall be entitled to deliver the Goods by single delivery or installment at its option and, whenever the Goods are delivered, or are to be delivered, by installments, the Company shall be entitled to treat each delivery as a separate contract. Accordingly any failure by the Company to make one delivery (in whole or in part) shall not entitle the Customer to terminate any other contract or refuse any other deliveries.

### 7. Ownership and risk

7.1 Unless otherwise indicated, the risk of damage to the Goods shall pass to the Customer upon delivery to the Customer or its agents.

7.2 However, title to the goods shall not pass to the Customer until the Company has received payment in full of all sums due from the Customer under the Contract together with any interest accrued thereon and other charges. In the meantime, the Company shall retain full legal and beneficial title to the Goods and the Customer shall (a) hold the goods in a fiduciary capacity as the Company's bailee free from any charge, lien or other encumbrance, (b) shall keep the Goods fully insured with a reputable insurer, and (c) shall store the Goods separately in such a way that they can be clearly identified as the Company's property. In this period the Company shall be entitled to recover possession of the Goods (or any of them) at any time and for any reason whatsoever and shall be entitled without restriction to lawfully enter upon the premises to the customer for the purposes of removing the Goods. The customer shall pay all costs and

expenses incurred by the Company in exercising this right.

7.3 If, pending the passing title in the Goods, the Customer sells or otherwise disposes of the Goods in such manner as to pass valid title to a third party, the Customer shall hold the full proceeds of such a sale (and pending payment the right to receive the proceeds of such a sale) on trust for the Company in a separate and identifiable bank account. During the same period, the Customer will pay the said proceeds to the Company on demand notwithstanding that any period of credit extended to the Customer may not have expired. In addition the Customer agrees that it will assign to the Company upon the Company's request all of its rights (under such a contract of sale) against any subsequent purchaser of the Goods.

7.4 Notwithstanding that title may not have passed to the Customer, the Company may maintain an action for the price of the Goods supplied. The Customer acknowledges that nothing in clauses 7.2 and 7.3 above confers any right upon the Customer to return or reject the Goods supplied or to refuse, defer or delay payment for them.

### 8. Lien

8.1 The Company shall (without prejudice to any other remedy available to it) have in respect of all unpaid debts and other sums due from the Customer under the Contract a general lien on any goods and property whatsoever in its possession (whether in relation to the contract or otherwise) which are or intended to become the property of the Customer.

8.2 Pursuant to that lien, the Company shall be entitled upon fourteen days written notice to the Customer to sell any goods or property so held upon such terms as it thinks fit, and to keep the proceeds of the sale thereof in diminution of the debts, the other sums due and all costs and expenses incurred in or about effecting the sale.

### 9. Cancellation of Orders

Orders for Goods which have been accepted by the Company may not be cancelled or suspended without the Company's prior written consent which consent the Company may give or withhold in its absolute discretion.

### 10. Invalidity of any Contractual Term

If any clause or sub-clause or part thereof contained in these Terms and Conditions is held by any court or other competent authority to be invalid or unenforceable in whole or in part, the validity of the remainder of the clause or sub-clause and of the remaining clauses and sub-clauses of these Terms and Conditions shall not be affected thereby.

### 11. Waiver

No waiver by the Company of any particular default or breach of Contract by the Customer shall be considered as a waiver of any subsequent default or breach of the same or of any other provision of the Contract.

### 12. Assignment

The customer may not assign the benefit or burden of the Contract without the written consent of the Company which the Company may give or withhold in its absolute discretion.

### 13. Force Majeure

In the event that the normal course of the Contract is frustrated, prevented, interrupted, hindered, delayed or rendered unduly expensive in any way whatsoever through war, rebellion, civil commotion, strike, lock-out or industrial dispute, fire, explosion, earthquake, act of God, flood, drought or bad weather, the unavailability or late delivery of supplies, the inability to secure labour or by any other cause whatsoever beyond the Company's control, the Company shall promptly give notice thereof to the Customer and shall have the right to cancel the Contract or defer its performance for as long as such force majeure shall continue.

### 14. Proper Law

The construction validity and performance of the Contract shall be governed by English Law and all disputes or questions which may arise out of or in connection with or in relation to the Contract shall be decided by the English Courts.

### 15. Warranties and limitation of liability

15.1 All Goods are sold on the basis that the Customer is neither a consumer nor deals as a consumer within the meaning of the Unfair Contract Terms Act 1977. Where the Goods are supplied under a consumer transaction, the statutory rights of the Customer shall be unaffected by anything set out in these Terms and Conditions.

15.2 The Company hereby warrants that the Goods are at the date of delivery free from any material defect in workmanship and will remain free from any material defect in workmanship and materials for a period of 2 years from the date of delivery to the Customer and correspond with any agreed written specification but the Company's liabilities under this warranty shall be limited to making available free of charge the labour and materials required to make good any such defects or (at the Company's option) replacing any defective Goods. The Company's liability under this warranty is also subject to the following conditions and limitations:

- The Company will not accept any liability for any defective or faulty Goods supplied, unless the Customer gives the Company written notice of the defect or defects in question within 90 days of delivery (save where the defect or defects are of a nature which would not normally be apparent upon a reasonable inspection, in which case the notice of defect or defects must be given within 14 days of discovering the same);
- The Company will not accept any liability for goods damaged in transit unless the Customer gives it written notice of the damage within 5 working days of delivery;
- The Goods having been properly stored and used by the Customer prior to the defect occurring;
- The Company will not accept any liability whatsoever in relation to any goods which have been fitted incorrectly or subjected to any incorrect, abnormal or improper load use accident or unauthorised modification repair or application, whether by the Customer or any third party;
- The goods having been used in accordance with the Company's instructions whether written or oral;
- The Goods having been subjected to proper and adequate inspection after installation and properly maintained in accordance with the Company's guidelines;
- The Goods having been returned at the Company's request but at the Customer's expense for inspection; and
- The Company having received the total price for the Goods by the due date for payment.

Without prejudice to the provisions of clause 7.1 above, all goods which are returned to or replaced by the Company, shall become the property of the Company.

15.3 The warranty contained in clause 15.2 above is given in lieu of and shall be deemed to exclude all other warranties and conditions whether express or implied whether arising by common law, statute or otherwise to the fullest extent permitted by law, other than that relating to title to the Goods. The warranty contained in clause 15.2 does not extend to parts, materials or equipment not manufactured by the Company, in respect of which the Customer shall only be entitled to the benefit of any such warranty or guarantee as is given by the manufacturer to the Company. The warranty contained in clause 15.2 does not extend to cosmetic defects occurring after supply. In corrosive atmospheres stainless steel parts may show discolouration.

15.4 Save as provided under the Unfair Contract Terms Act 1977 and as mentioned in this clause 15, all liability (both in contract and in tort) of the Company for any consequential losses, loss of profit and other losses of a similar nature which may be suffered or sustained by the Customer in connection with the contract and/or the quality or performance of the goods supplied there under is excluded to the fullest extent permitted by law.

15.5 All Goods are sold on the basis that the Customer has satisfied itself as to the suitability of the Goods for use or resale in accordance with its own specialised knowledge and skill and the Customer acknowledges that it has not placed any reliance upon the skill or judgment of the Company or of any of the Company's servants or agents. In the case of export orders, it is also the Customer's responsibility to ensure that the Goods comply with any legislation or regulations relating to their use in the country in question and the Company shall not therefore incur any liability whatever in respect thereof. The Company shall not be under any liability in respect of any defect arising from fair wear and tear, wilful damage or arising from any drawing, design or specification supplied by the Customer.

15.6 The Customer agrees to indemnify the Company against all claims relating to Goods sold to the Customer in respect of any loss damage or expense, whether direct or consequential, sustained by any third party save only in respect of death or personal injury caused by the negligence of the Company or any of its employees, agents or sub-contractors.

15.7 Notwithstanding the above provisions, the Company does not exclude or restrict its liability for death or personal injury caused by its negligence or that of its employees, agents or sub-contractors.

15.8 Some states do not permit some of the limitations or exclusions noted above, so some of them may not apply to the Customer.

# STA-LOK<sup>®</sup>

Sta-Lok Terminals Limited  
The Forge, Mistley Heath  
Manningtree, Essex  
CO11 2QH England

Talk to our Sales Team  
**+44(0)1206 391509**

or contact us by Fax  
**+44(0)1206 395286**

E-mail orders to  
**orders@stalok.com**

or order online at  
**www.stalok.com**

*Chainplate photograph  
courtesy of  
Broadblue Catamarans*

